

CHANNELS SYSTEM WITH GRATING COVERS WIDTH 150 mm.

PC.023

They represent an excellent solution where a channel with a high drainage capacity is called for together with the functionality of a grating cover enabling them to be inspected throughout.

Combined with 300 x 300 mm collection gullies, the same as the PC.001 slot channel systems, they are easily washed and inspected and the aspects of hygiene and cleanliness are provided for in compliance with Community regulations. Protection from sewerage discharge is ensured by an anti-smell siphon and by a removable filter basket.

Constructed in AISI 304 stainless steel (or AISI 316 on request) parameters such as length, height, position of the discharges, can be varied depending on individual requirements.

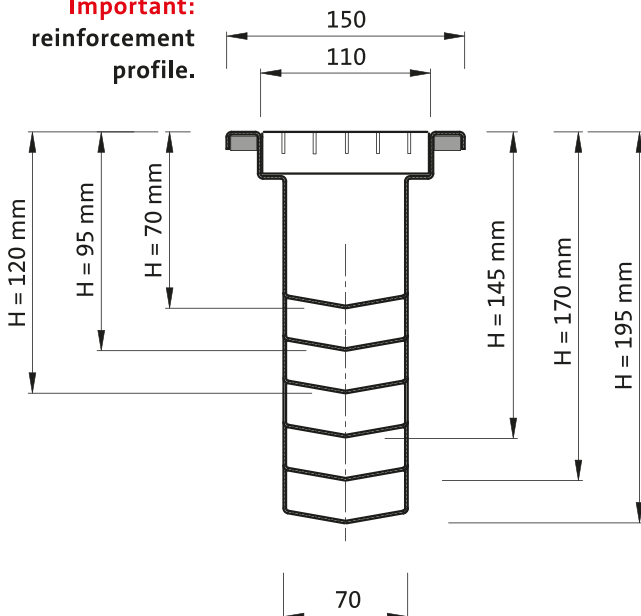
For small supplies, to optimise the transport operations, the various pieces can be assembled into maximum lengths of 4.00 mt.

To facilitate the installation, a drawing will be attached to the material showing a system of numbering for installation of the pieces in the correct sequence.



Main features	
Channel width on the floor	150mm
Inside channel width	70mm
Thickness of material	2mm (3mm on request)
Drainage slope	0,5% (5mm per linear metre)
Minimum height	70mm
Maximum height	195mm (30 metres)
Max. transport length	5.00 mt.
Cramps for anchoring	every 330mm
Flanges with screws	every 5.00 mt.

Important:
reinforcement
profile.



Section of the channel with a sequence of the variation of the slope up to 25.00 mt; the heights are with reference to module lengths of 5.00 MT. From MT. 1,00, MT. 1,50, MT. 2,00, MT. 2,50, MT. 3,00, MT. 3,50, MT. 4,00, MT. 4,50.

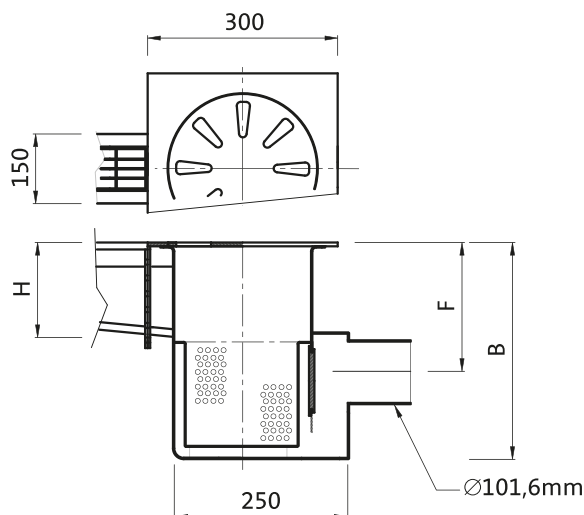
NOTE: Work is regularly carried out with totally personalised lengths taking no account of standard modules.

CHANNELS SYSTEM WITH GRATING COVERS WIDTH 150 mm. HORIZONTAL DISCHARGE

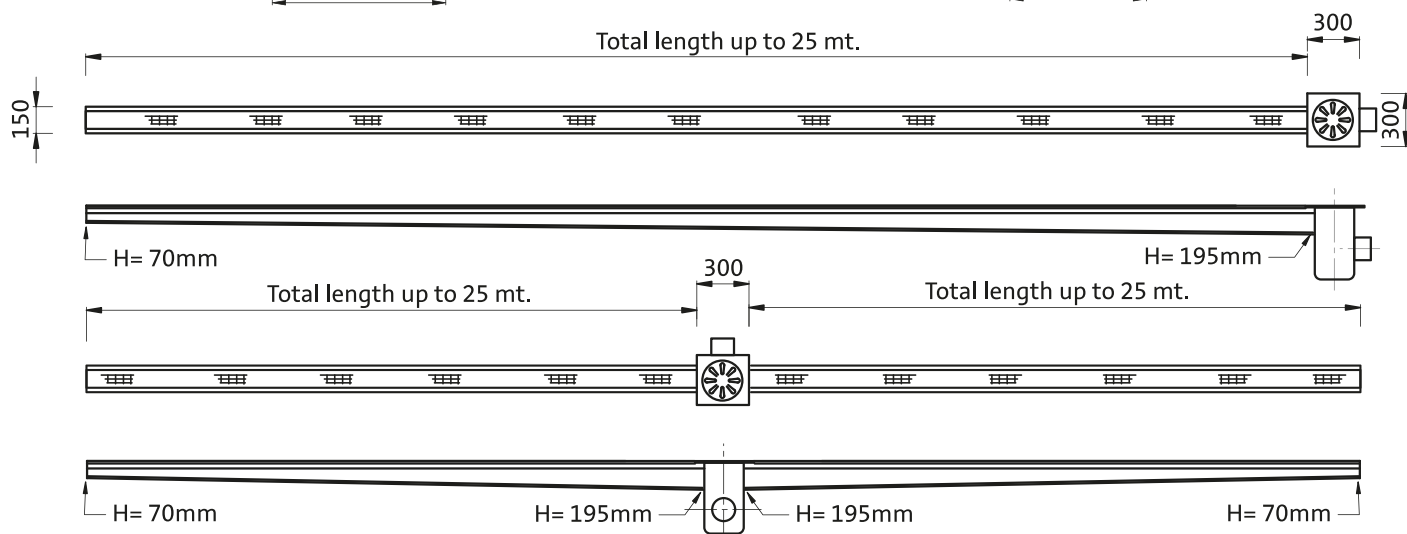
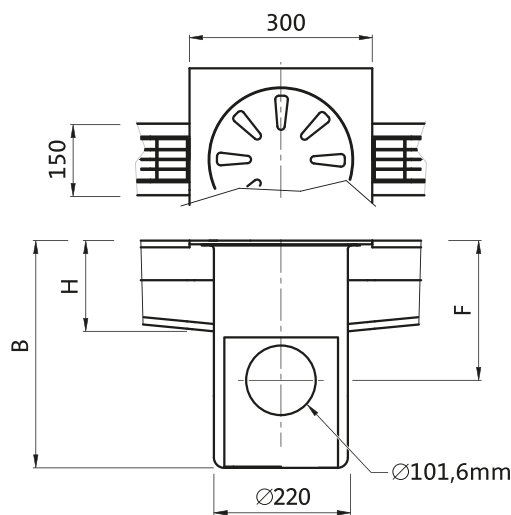


Note:
On request all systems can be fitted with adjustable feet for positioning and height levels.

PC.002GL GULLY WITH SINGLE CONNECTION FOR CHANNEL, HORIZONTAL DISCHARGE.



PC.003GL GULLY WITH DOUBLE CONNECTION FOR CHANNEL, HORIZONTAL DISCHARGE.



Note:
All systems are produced in accordance with the requirements of the customer, hence parameters such as length and position of the discharges are not binding.

Channel length	Channel height "H" on gully	Size "B"	Middle discharge depth "F"
Up to MT. 5,00	95mm	280mm	130mm
From MT. 5 to MT. 10	120mm	305mm	155mm
From MT. 10 to MT. 15	145mm	330mm	180mm
From MT. 15 to MT. 20	170mm	355mm	205mm
From MT. 20 to MT. 25	195mm	380mm	230mm

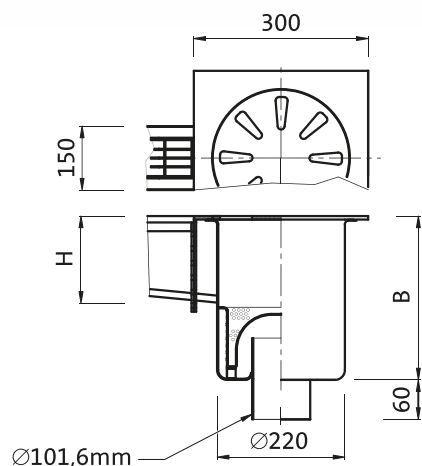
CHANNELS SYSTEM WITH GRATING COVERS WIDTH 150 mm. VERTICAL DISCHARGE



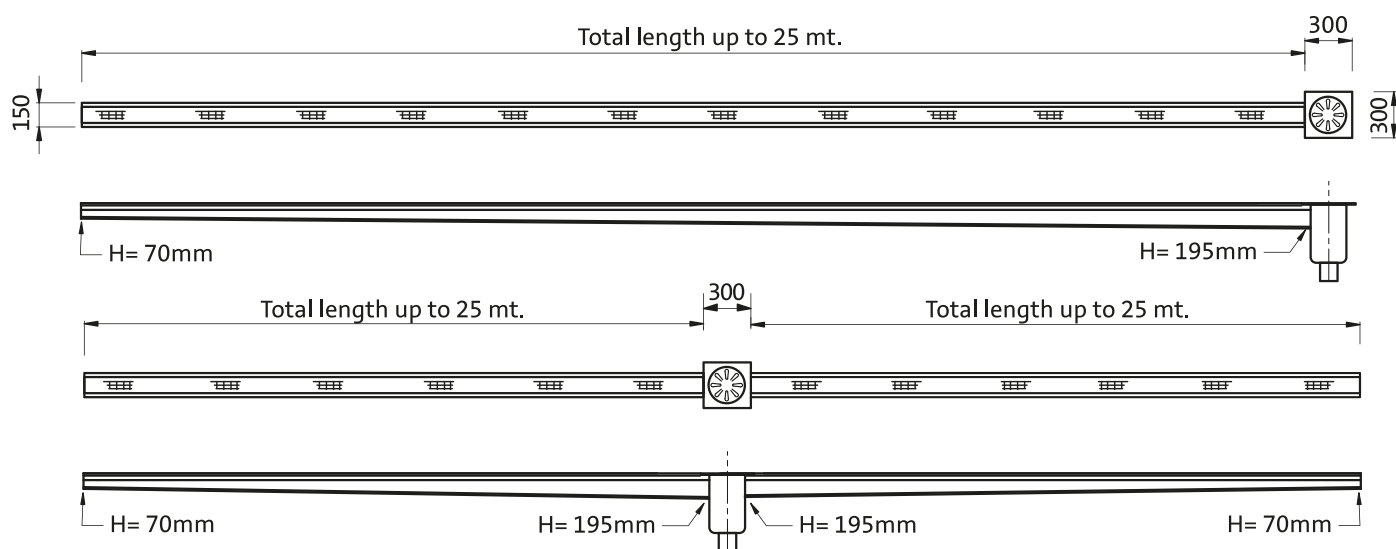
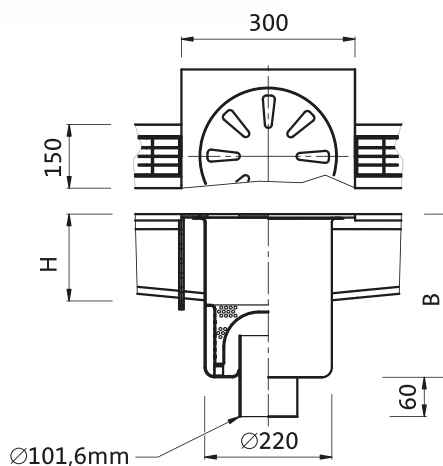
Note:

On request all systems can be fitted with adjustable feet for positioning and height levels.

PC.002GV GULLY WITH SINGLE CONNECTION FOR CHANNEL, VERTICAL DISCHARGE.



PC.003GV GULLY WITH DOUBLE CONNECTION FOR CHANNEL, VERTICAL DISCHARGE.



Note:

All systems are produced in accordance with the requirements of the customer, hence parameters such as length and position of the discharges are not binding.

Channel height	Channel height "H" on gully	Size "B"
Up to MT. 5,00	95mm	265mm
From MT. 5 to MT. 10	120mm	290mm
From MT. 10 to MT. 15	145mm	315mm
From MT. 15 to MT. 20	170mm	340mm
From MT. 20 to MT. 25	195mm	365mm

CHANNELS WITH GRATING COVERS

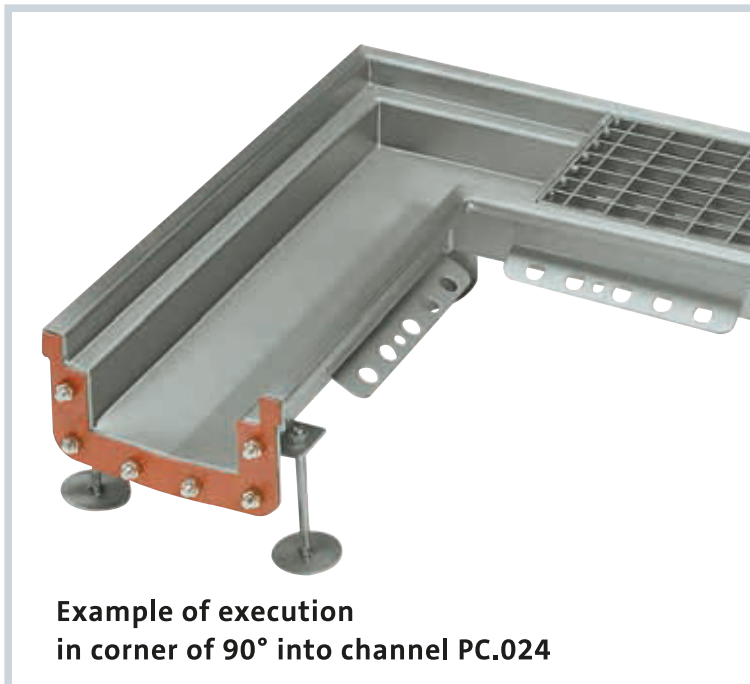
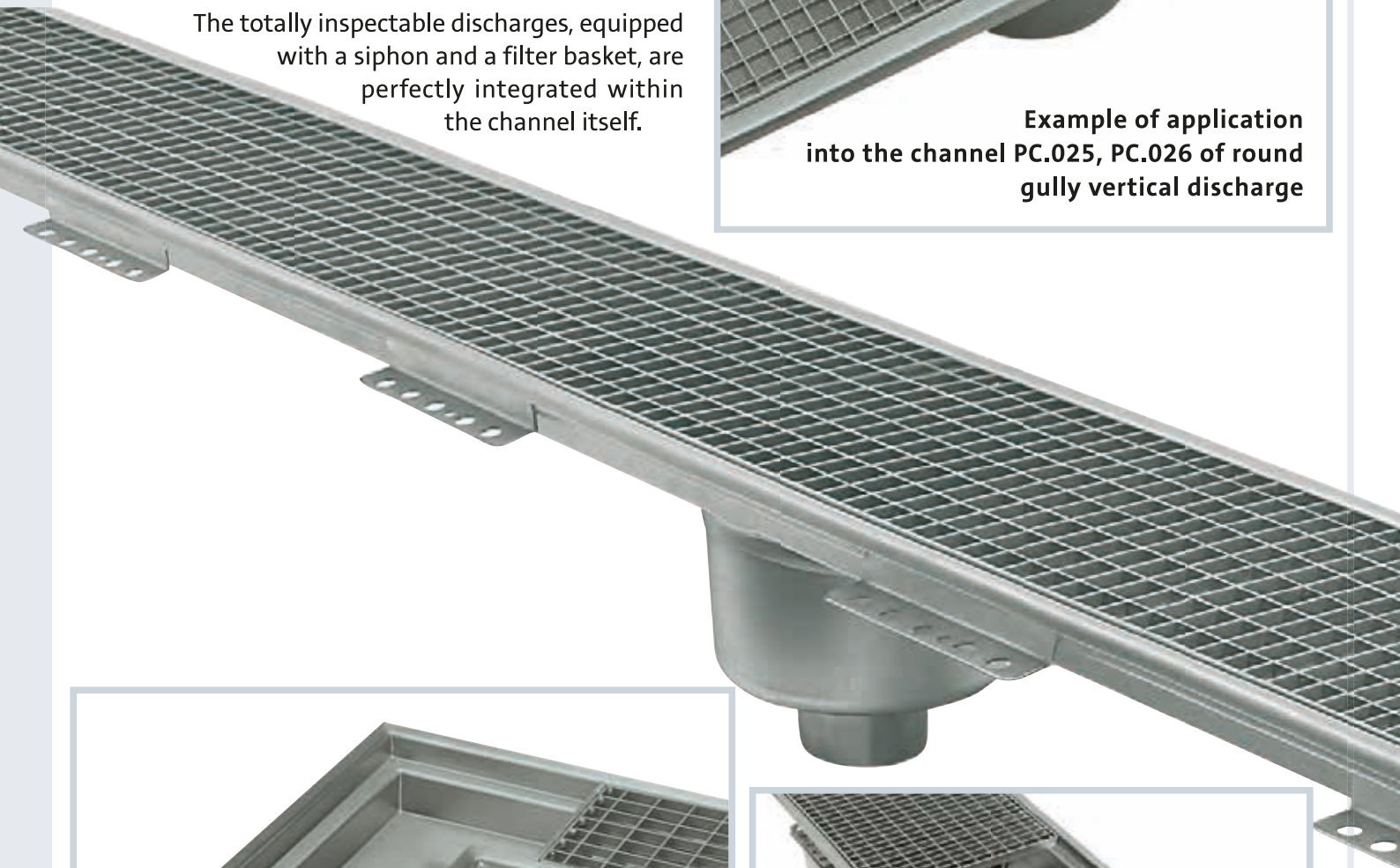
The "Leoni" channels with grating covers are particularly recommended in instances where there is a need for draining large quantities of water relatively quickly; in fact it is possible to combine these items with very large size discharges.

Constructed in AISI 304 stainless steel (or AISI 316 on request) parameters such as length, height, position of the discharges and the flow-rate of the grating covers can be varied depending on individual requirements.

The totally inspectable discharges, equipped with a siphon and a filter basket, are perfectly integrated within the channel itself.



Example of application into the channel PC.025, PC.026 of round gully vertical discharge



Example of execution in corner of 90° into channel PC.024



Large capacity collecting well with separate collection of light and heavy solid residues

In the event that the supply is for large quantities the various modules can be supplied in lengths of 6.00 mt.

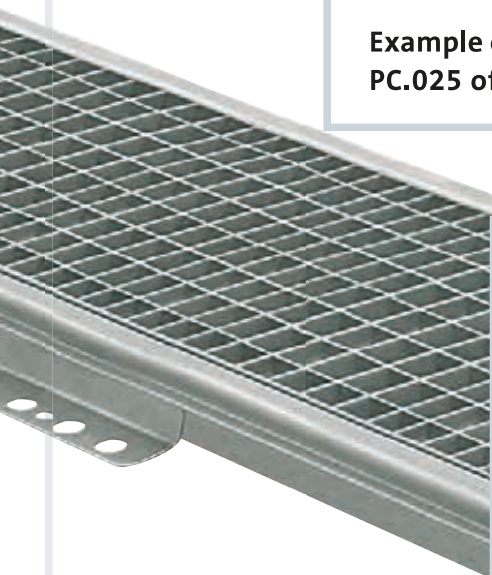
The assembly of the various gullies and the channels is provided for by means of flanges with silicon seals that are secured with bolts to ensure that they remain water-tight.

For small supplies, to optimise the transport operations, the various pieces can be assembled into maximum lengths of 4.00 mt.

To facilitate the installation, a drawing will be attached to the material showing a system of numbering for installation of the pieces in the correct sequence.



Example of application into the channel PC.024, PC.028, PC.026, PC.025 of square gully horizontal outlet.



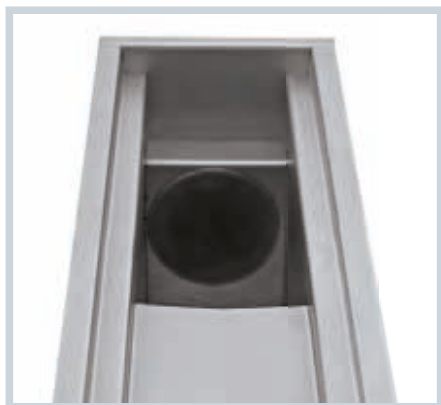
CHANNELS WITH GRATING COVERS

PC.024 HORIZONTAL DISCHARGE

PC.028

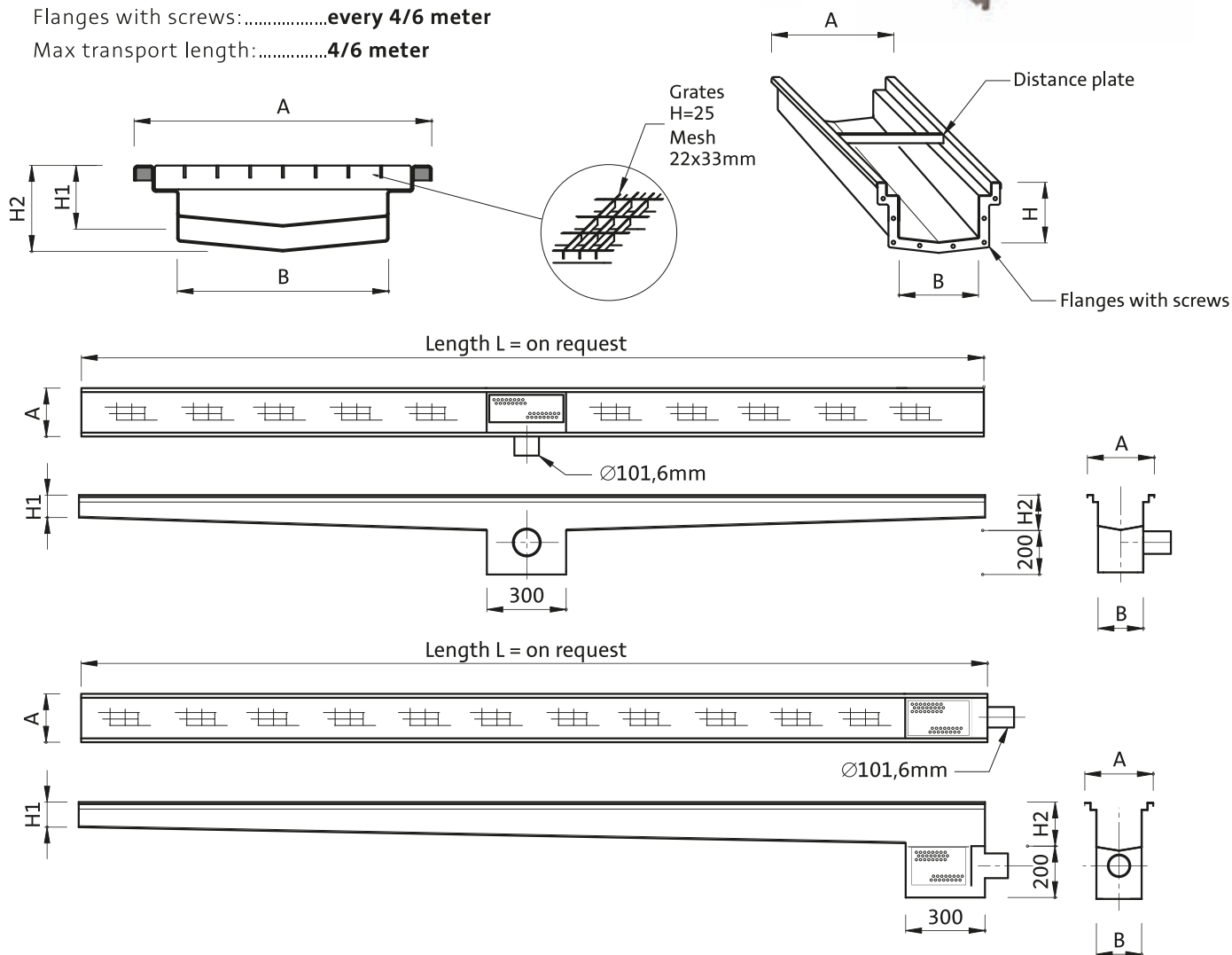
PC.025

PC.026



Main Features

- Thickness channels:2 mm (3 mm on request)
- Standard grates:Height H=25 mm, mesh 22x33 mm
- Integrated slope:8 mm per running meter
- Flanges with screws:every 4/6 meter
- Max transport length:4/6 meter



Note:

All systems are produced in accordance with the requirements of the customer, hence parameters such as length and position of the discharges are not binding.

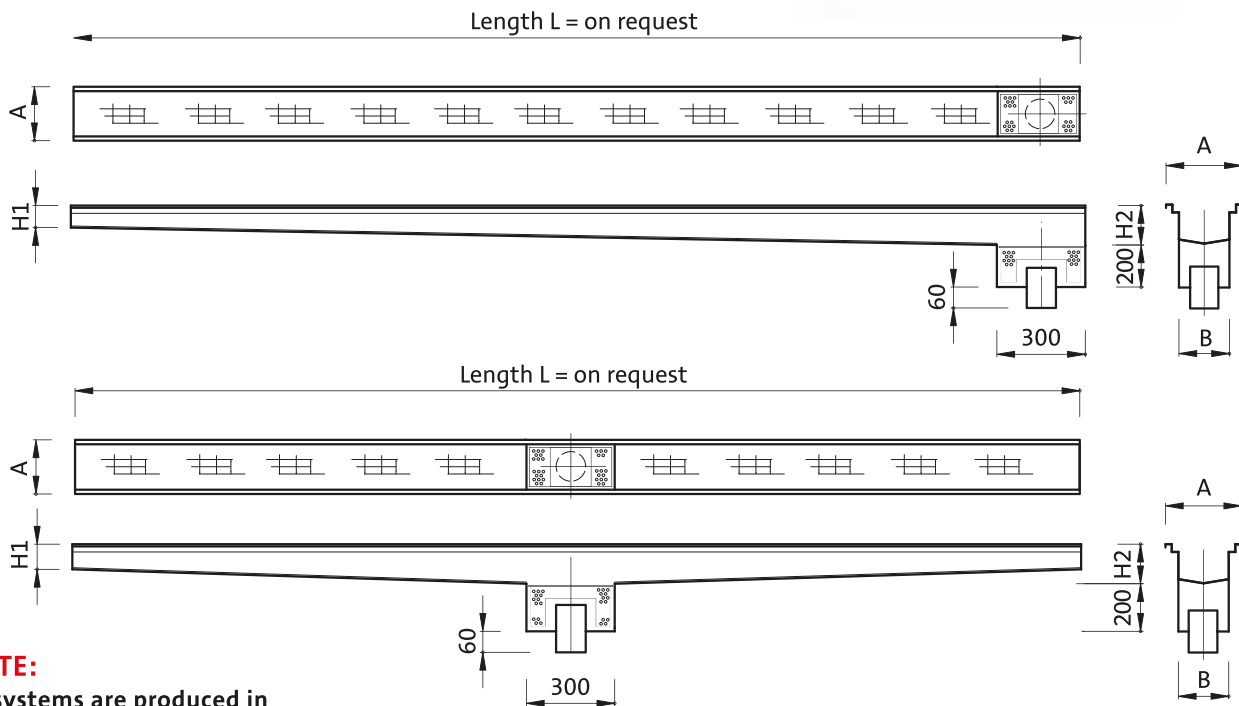
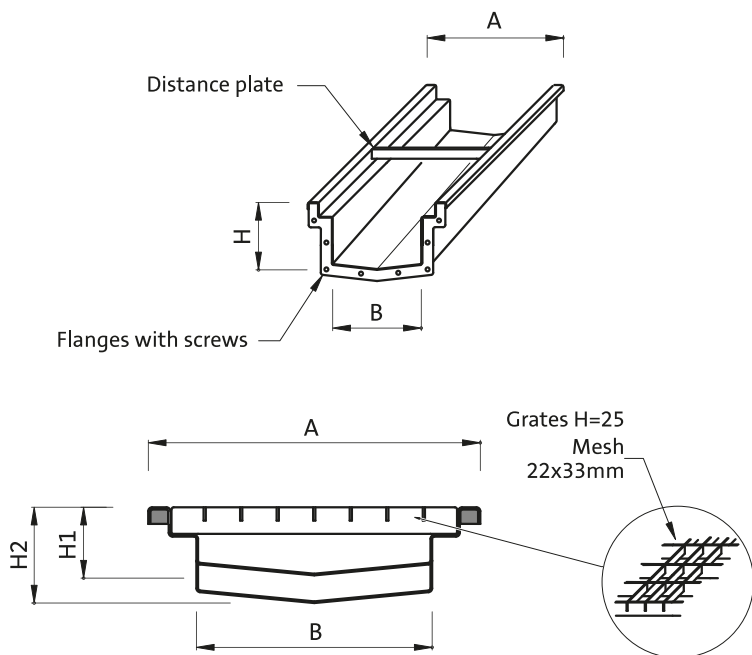
Main measurements					
Item	Size "A"	Size "B"	Height "H1"	Height "H2"	Length "L"
PC.024	200mm	120mm	60mm	H1 + 8mm/MT. Per running meter	On request
PC.028	250mm	170mm	60mm		On request
PC.025	300mm	220mm	60mm		On request
PC.026	400mm	320mm	60mm		On request

PC.024 VERTICAL DISCHARGE

PC.028

Main Features

- Thickness channels:.....**2 mm (3 mm on request)**
- Standard grates:.....**Height H=25 mm, mesh 22x33 mm**
- Integrated slope:.....**8 mm per running meter**
- Flanges with screws:.....**every 4/6 meter**
- Max transport length:.....**4/6 meter**



NOTE:

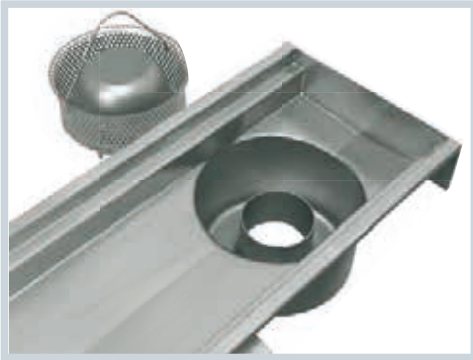
All systems are produced in accordance with the requirements of the customer, hence parameters such as length and position of the discharges are not binding.

Main measurements					
Item	Size "A"	Size "B"	Height "H1"	Height "H2"	Length "L"
PC.024	200mm	120mm	60mm	H1 + 8mm/MT.	on request
PC.028	250mm	170mm	60mm	Per running meter	on request

CHANNELS WITH GRATING COVERS

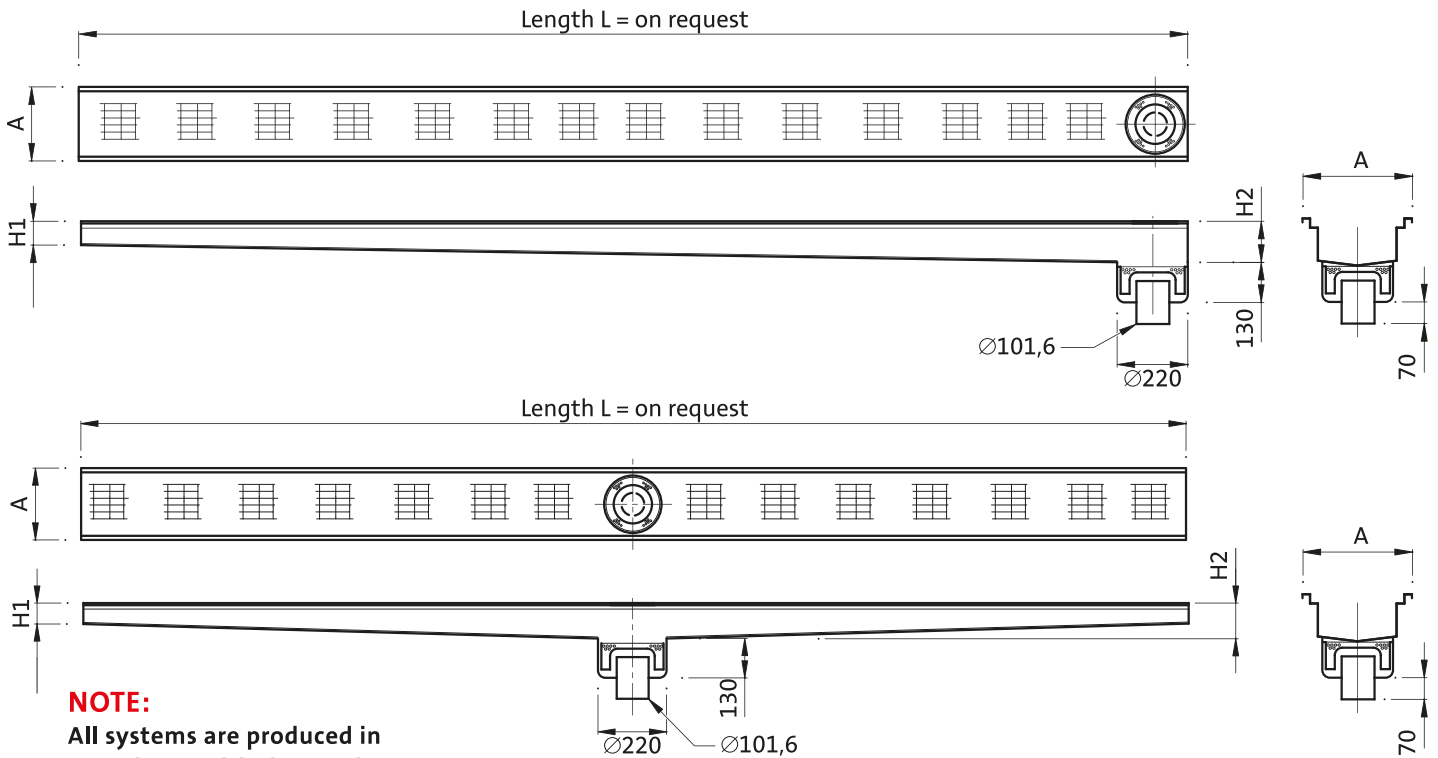
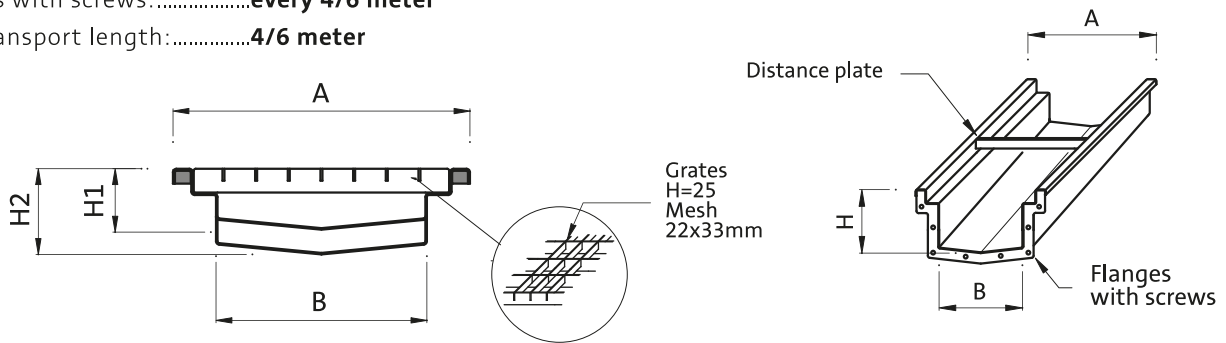
PC.025 VERTICAL DISCHARGE

PC.026



Main Features

- Thickness channels:.....2 mm (3 mm on request)
- Standard grates:.....Height H=25 mm, mesh 22x33 mm
- Integrated slope:.....8 mm per running meter
- Flanges with screws:.....every 4/6 meter
- Max transport length:.....4/6 meter



NOTE:
All systems are produced in accordance with the requirements of the customer, hence parameters such as length and position of the discharges are not binding.

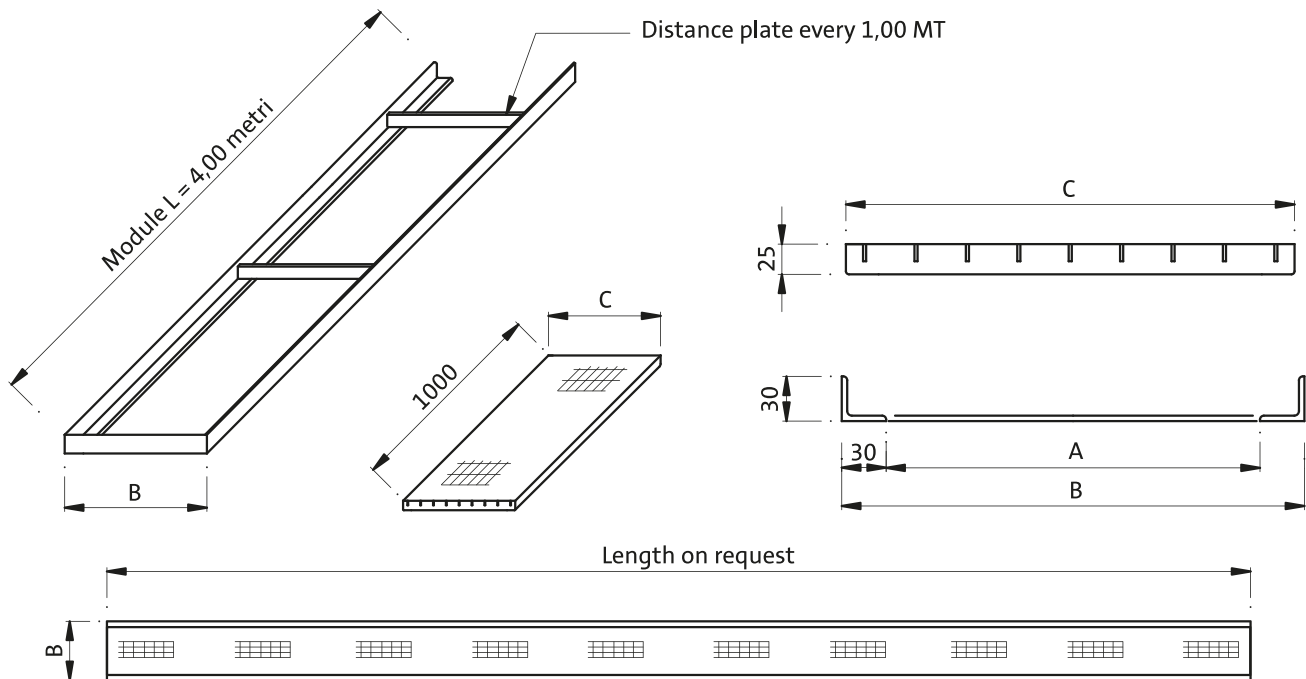
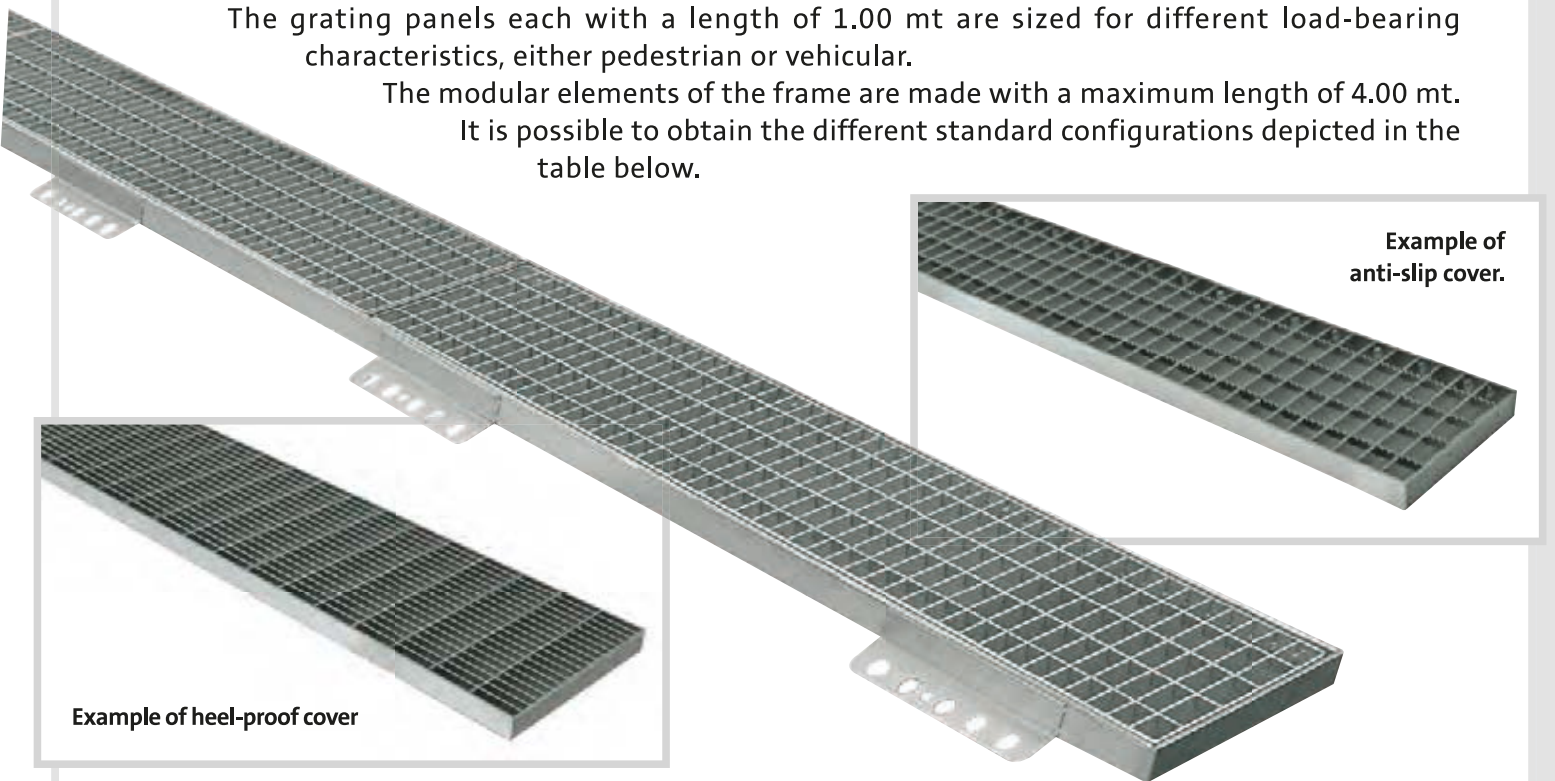
Main measurements					
Item	Size "A"	Size "B"	Height "H1"	Height "H2"	Length "L"
PC.025	300mm	220mm	60mm	H1 + 8mm/MT. Per running meter	on request
PC.026	400mm	320mm	60mm		on request

ANGLE FRAME WITH GRATING COVERS

Used in situations in which there is a need for a drainage channel with a grating panel surface resting on an angular frame, with inside channel width usually in concrete. Constructed in AISI 304, they are used particularly in exterior situations such as courtyards and forecourts.

The grating panels each with a length of 1.00 mt are sized for different load-bearing characteristics, either pedestrian or vehicular.

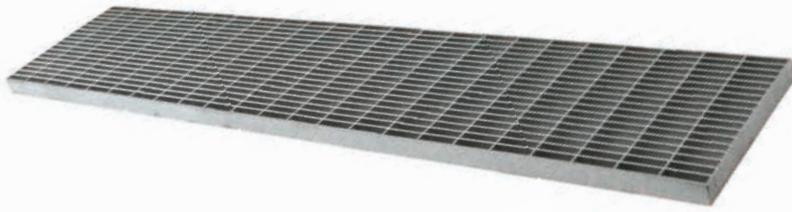
The modular elements of the frame are made with a maximum length of 4.00 mt. It is possible to obtain the different standard configurations depicted in the table below.



NOTE:
Available with anti-slip, heel-proof panels.

Standard dimensions			
Item	Size "A"	Size "B"	Size "C"
TGR.150	61mm	121mm	108mm
TGR.200	108mm	168mm	155mm
TGR.250	158mm	218mm	205mm
TGR.300	208mm	268mm	255mm
TGR.400	308mm	368mm	355mm

GRATING COVERS FOR CHANNELS (non standard)



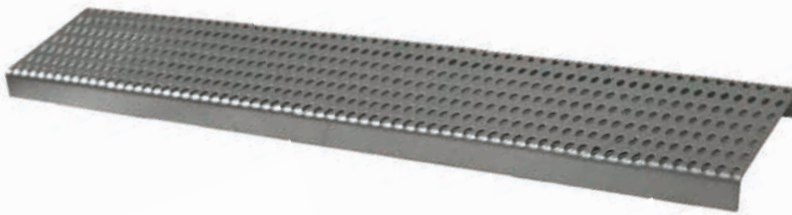
Heel-proof version grating panel

NOTE: Medium suitability for vehicles for all models.



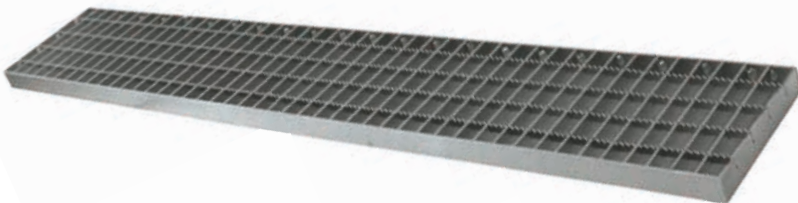
Panel in textured heavy duty sheet metal with slots and reinforcements in heel-proof plate

NOTE: Good suitability for vehicles for all models.



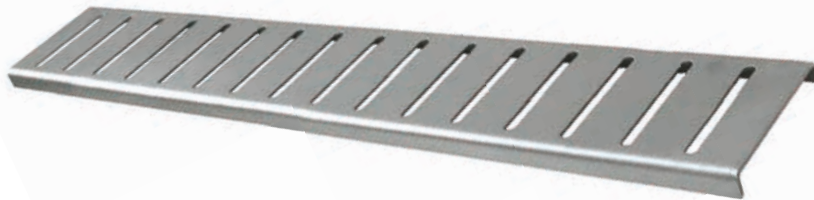
Panel in perforated sheet metal normally used with PC 023

NOTE: Not suitable for vehicles



Grating panel with anti-slip grooves

NOTE: For all models



Slotted panel in heavy duty sheet steel particularly for PC 023 - PC 024



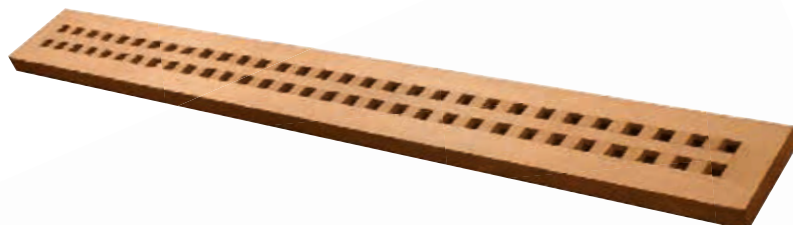
Flat bar panel

NOTE: Excellent suitability for vehicles for all models



Heavy duty plate panel + square section bar reinforcements.

Particularly for PC 023 - PC 024. Excellent suitability for vehicles



Cover in Tek, mainly for channels in shower and pool areas.