

PC.001

The "Leoni" slot channels is the ideal solution for the drainage of industrial flooring of all types.

Manufactured entirely of AISI 304 stainless steel (or AISI 316 on request), combined with 300 x 300 mm collection gullies they are easily washed and inspected and the aspects of hygiene and cleanliness are provided for in compliance with Community regulations.

Protection from sewerage discharge is ensured by an anti-smell siphon and by a removable filter basket.

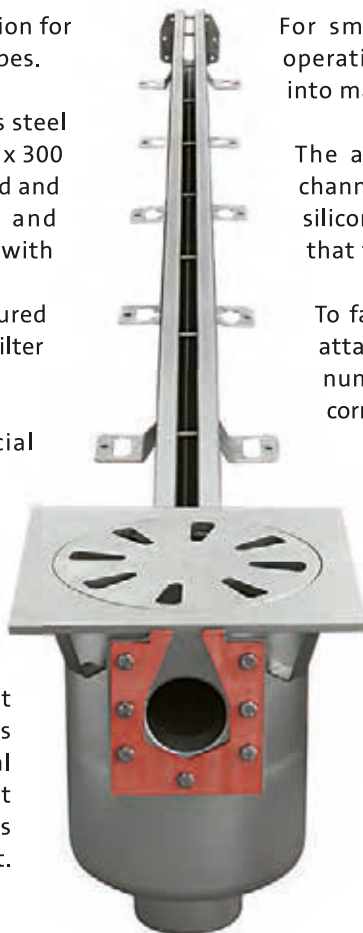
Their structure, thanks also to the special cramps for anchoring in concrete make the channel especially tough in situations with high levels of flow-rate.

The construction of these systems is carried out completely in accordance with the requirements of the customer with one of our support technicians; in fact every quotation will be provided with its associated drawing showing the principal technical characteristics. In the event that the supply is for large quantities the various modules can be supplied in lengths of 6.00 mt.

For small supplies, to optimise the transport operations, the various pieces can be assembled into maximum lengths of 4.00 mt.

The assembly of the various gullies and the channels is provided for by means of flanges with silicon seals that are secured with bolts to ensure that they remain water-tight.

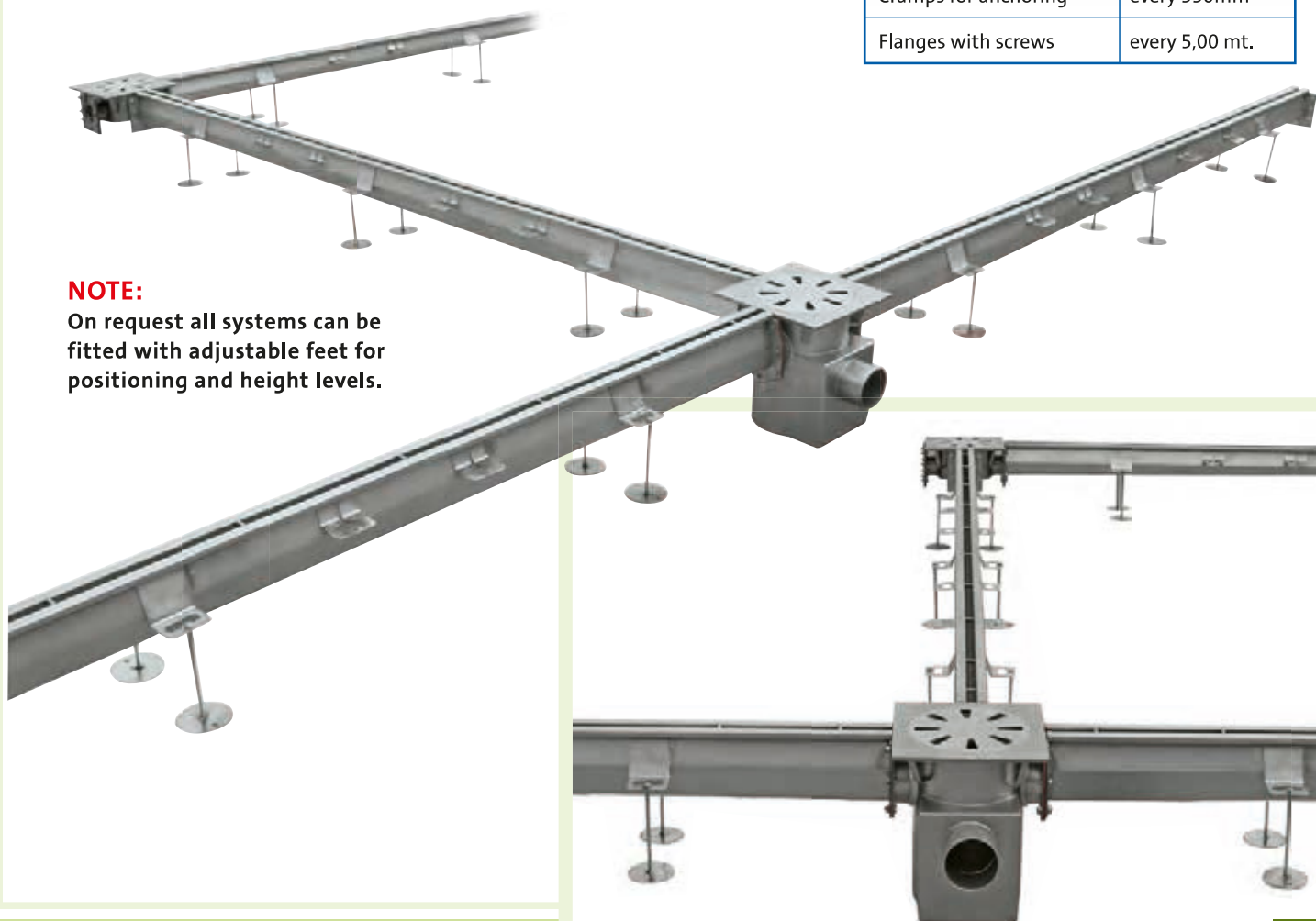
To facilitate the installation, a drawing will be attached to the material showing a system of numbering for installation of the pieces in the correct sequence.



Main features	
Channel width	70mm
Channel slot	18mm
Thickness of material	2mm (3mm on request)
Drainage slope	0,5% (5mm per linear metre)
Minimum height	70mm
Maximum height	220mm (30 metres)
Max. transport length	5,00 mt.
Spacing rods	every 330mm
Cramps for anchoring	every 330mm
Flanges with screws	every 5,00 mt.

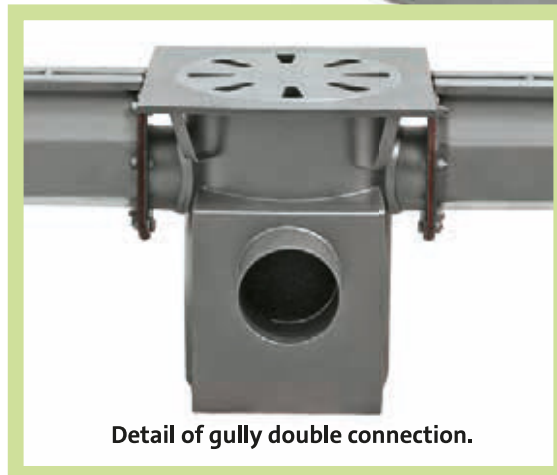
NOTE:

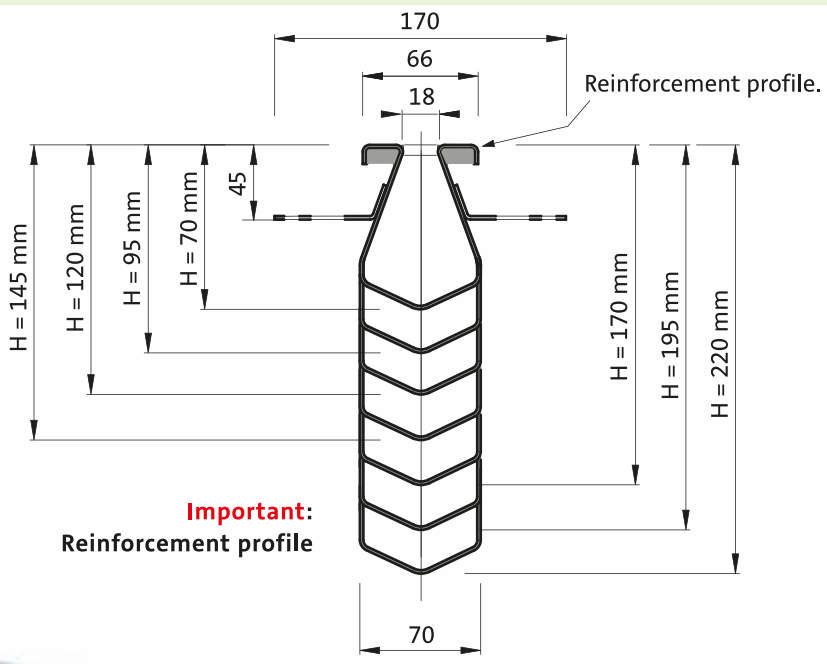
On request all systems can be fitted with adjustable feet for positioning and height levels.



STAINLESS STEEL SLOT CHANNELS

PC.001

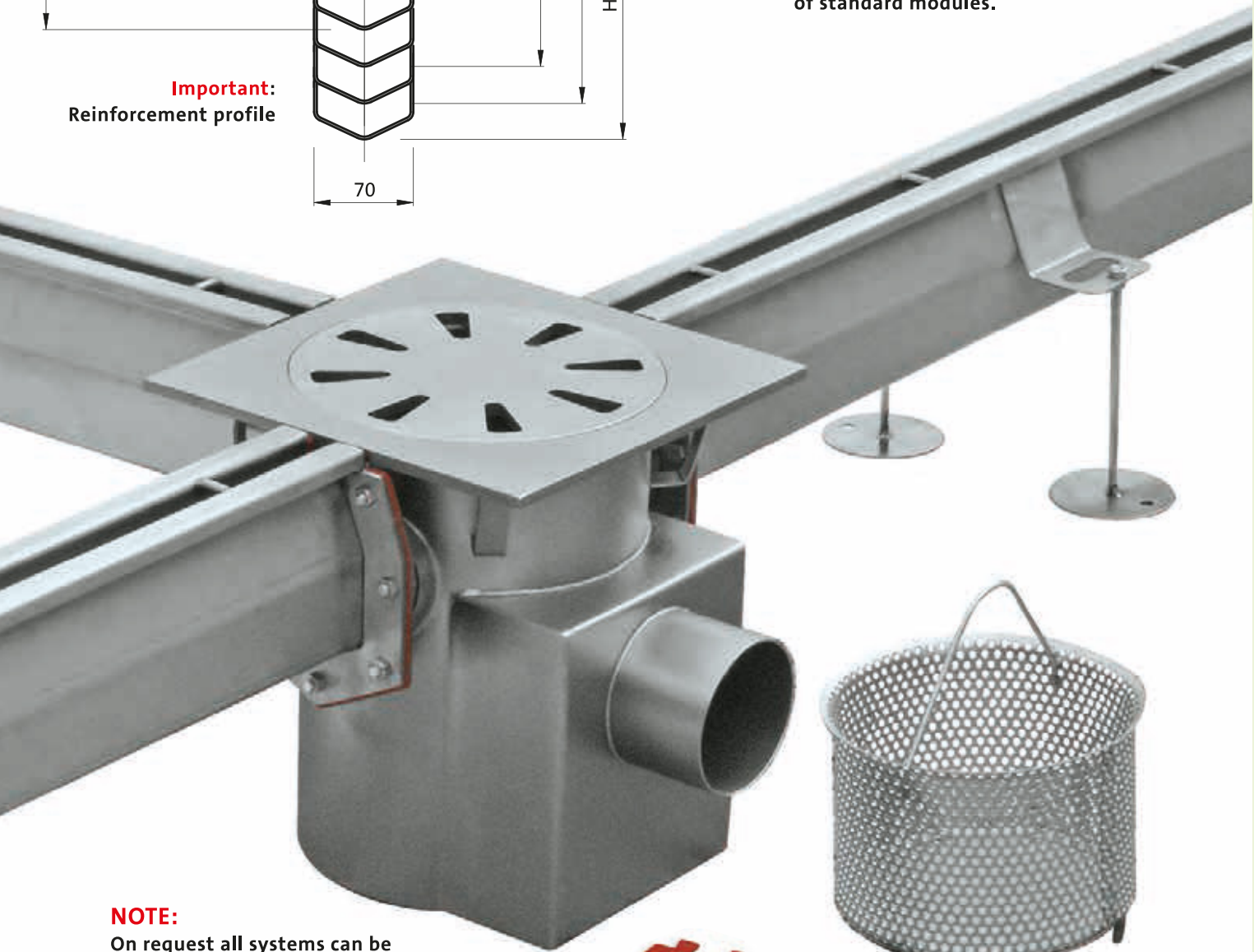




Section of the channel with a sequence of the variation of the slope up to 30.00 mt; the heights are with reference to module lengths of 5.00 mt. Obviously in the warehouse there are modules with lengths other than 5.00 mt. For example, 1.00 mt, 1.50 mt, 2.00 mt, 2.50 mt, 3.00 mt, 3.50 mt, 4.00 mt, and 4.50 mt.

NOTE: Work is regularly carried out with totally personalised lengths taking no account of standard modules.

Important:
Reinforcement profile



NOTE:
On request all systems can be fitted with adjustable feet for positioning and height levels.



Stainless steel bolts and screws.

Keys for mounting

Silicon seals for flanges.

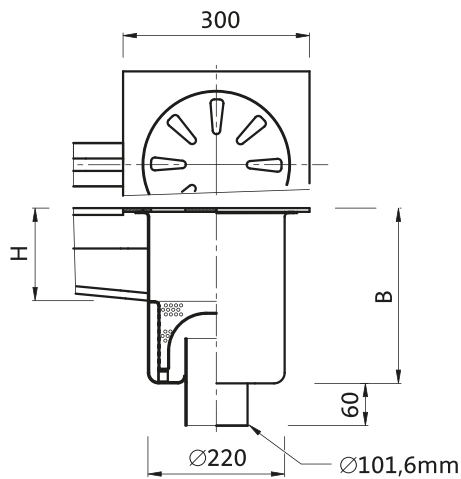
SLOT CHANNELS SYSTEMS WITH VERTICAL DISCHARGE



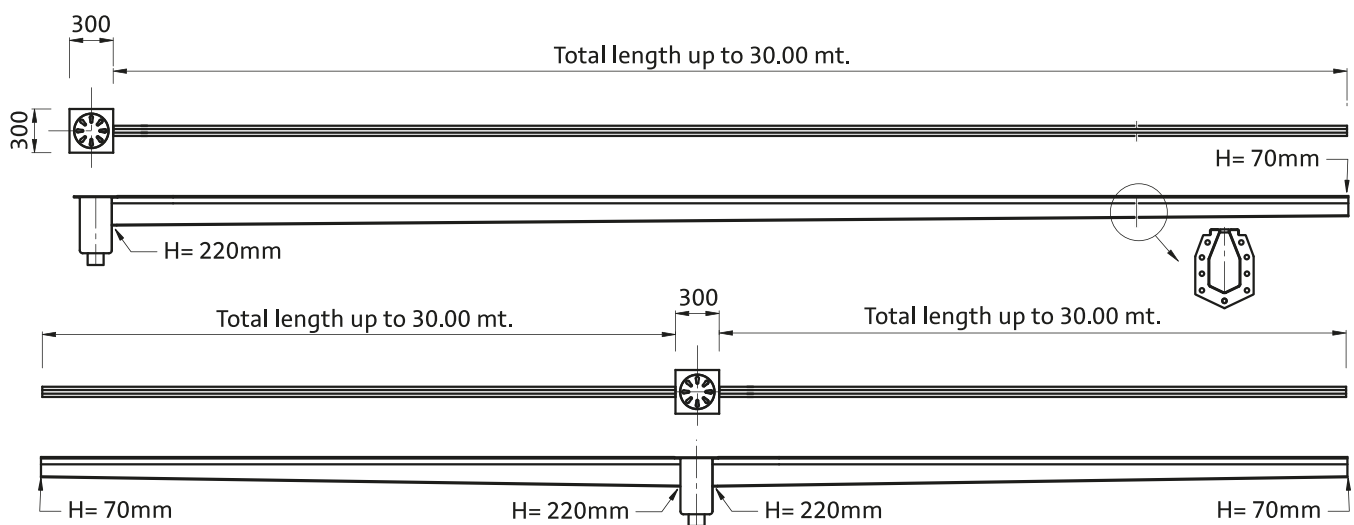
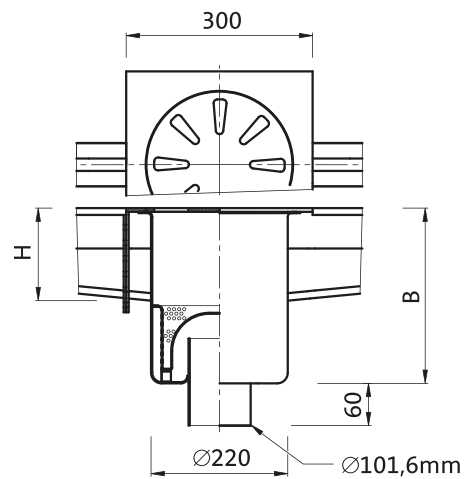
NOTE:

On request all systems can be fitted with adjustable feet for positioning and height levels.

PC.002V GULLY SINGLE CONNECTION WITH VERTICAL DISCHARGE



PC.003V GULLY DOUBLE CONNECTION WITH VERTICAL DISCHARGE



NOTE:

All systems are produced in accordance with the requirements of the customer, hence parameters such as length and position of the discharges are not binding.

Channel length	Channel height "H" on the gully	Size "B"
Up to MT. 5,00	95mm	265mm
From MT. 5 to MT. 10	120mm	290mm
From MT. 10 to MT. 15	145mm	315mm
From MT. 15 to MT. 20	170mm	340mm
From MT. 20 to MT. 25	195mm	365mm
From MT. 25 to MT. 30	220mm	390mm

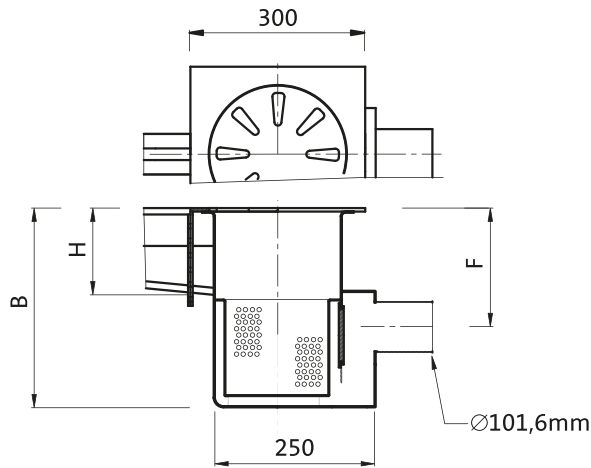
SLOT CHANNEL SYSTEMS WITH HORIZONTAL DISCHARGE



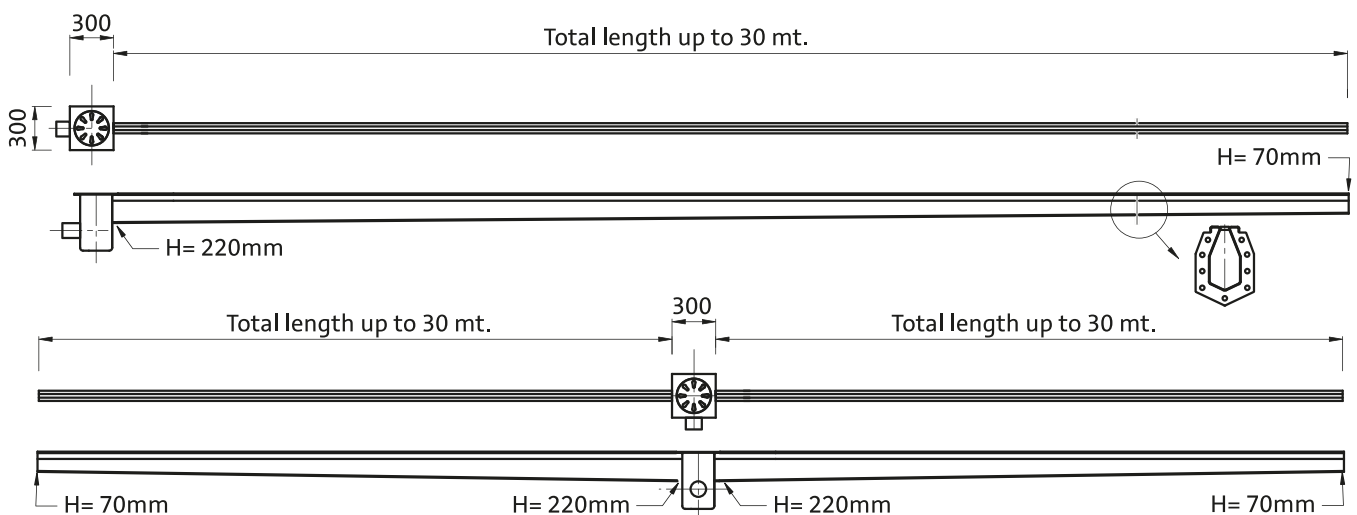
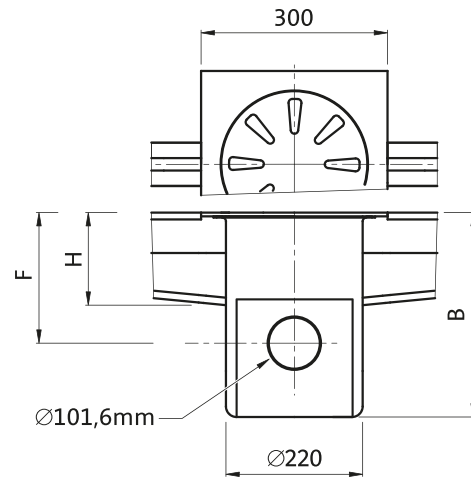
NOTE:

On request all systems can be fitted with adjustable feet for positioning and height levels.

PC.002L GULLY WITH SINGLE CONNECTION FOR CHANNEL, HORIZONTAL DISCHARGE.



PC.003L GULLY WITH DOUBLE CONNECTION FOR CHANNEL, HORIZONTAL DISCHARGE.



NOTE:

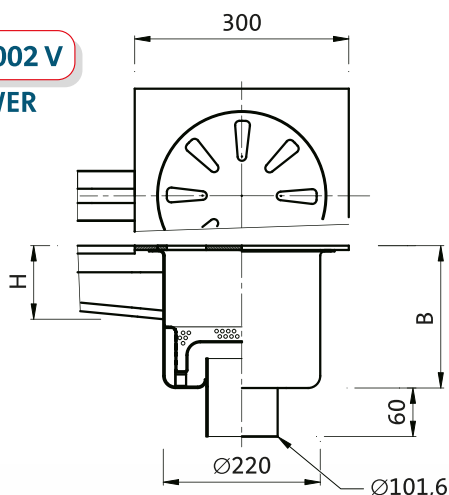
All systems are produced in accordance with the requirements of the customer, hence parameters such as length and position of the discharges are not binding.

Channel length	Channel height "H" on the gully	Size "B"	Middle discharge depth "F"
Up to MT. 5,00	95mm	280mm	130mm
From MT. 5 to MT. 10	120mm	305mm	155mm
From MT. 10 to MT. 15	145mm	330mm	180mm
From MT. 15 to MT. 20	170mm	355mm	205mm
From MT. 20 to MT. 25	195mm	380mm	230mm
From MT. 25 to MT. 30	220mm	405mm	255mm

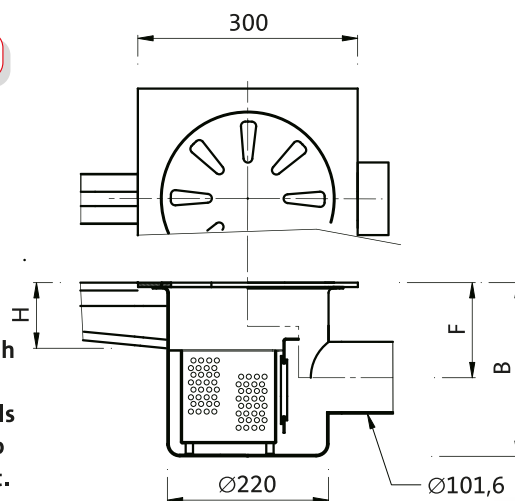
SLOT CHANNELS SYSTEMS WITH LOWER GULLIES

Especially for situations with problems of height on the footings it is possible to opt for lower gullies both with vertical or horizontal discharges, sizeable according to the length of the channel.

PC.002 V
LOWER



PC.002 L
LOWER



NOTE:
Example of gullies with the least depth achievable for channels with lengths of up to 5.00 mt and 10.00 mt.



NOTE:
If necessary is possible to do more low.

Channel length	Channel height "H" on gully	Size "B"
Up to MT. 5,00	95mm	210mm
From MT. 5 fino a MT. 10	120mm	235mm

Channel length	Channel height "H" on gully	Size "B"	Middle discharge depth "F"
Up to MT. 5,00	95mm	230mm	100mm
From MT. 5 fino a MT. 10	120mm	255mm	125mm

SPECIAL APPLICATIONS



On request the pipes below the channel with its associated connections and mounted using flanges and seals can be made with stainless steel.