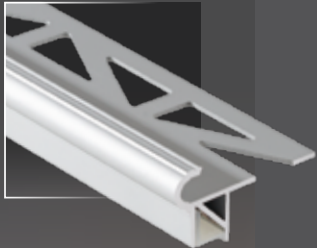


PROFILE SOLUTIONS FOR LED

Tiles / Natural stone
Flooring
Wall panelling
Wet areas

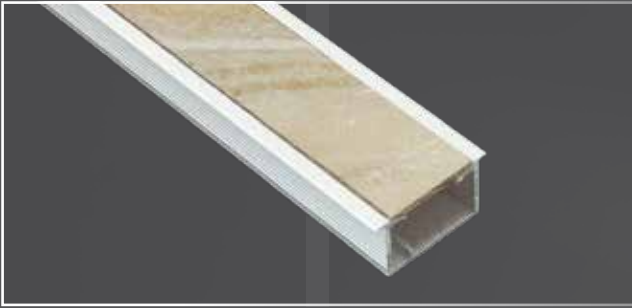


- DURALIS-*Stone*
- FLORENTOSTEP-LED
- DURALIS-LED *Wall*
- DURALIS-LED *Floor*
- SQUARELIGHT-LED
- LED ACCESSORIES



DURALIS-*Stone*

- Illuminated skirting profiles with a genuine natural stone inlay for extraordinary light accents on wall surfaces.
- For tiled flooring surfaces and furniture panelling.
- An absolute world first!
- Genuine natural stone.
- Use both lit and unlit – two effects in one product.



DURALIS-Stone
Complete profile, slate beige

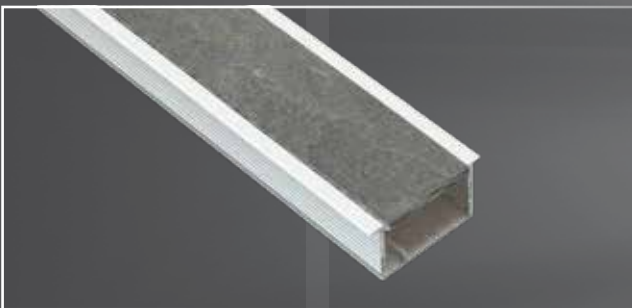
without LED strip
 Aluminium silver anodised with natural stone inlay
 for the adhesion of LED strips

Length: 240 cm
 Height: 9, 12.5 mm
 Width: 20 mm

DURALIS-Stone
Complete profile, slate red

without LED strip
 Aluminium silver anodised with natural stone inlay
 for the adhesion of LED strips

Length: 240 cm
 Height: 9, 12.5 mm
 Width: 20 mm

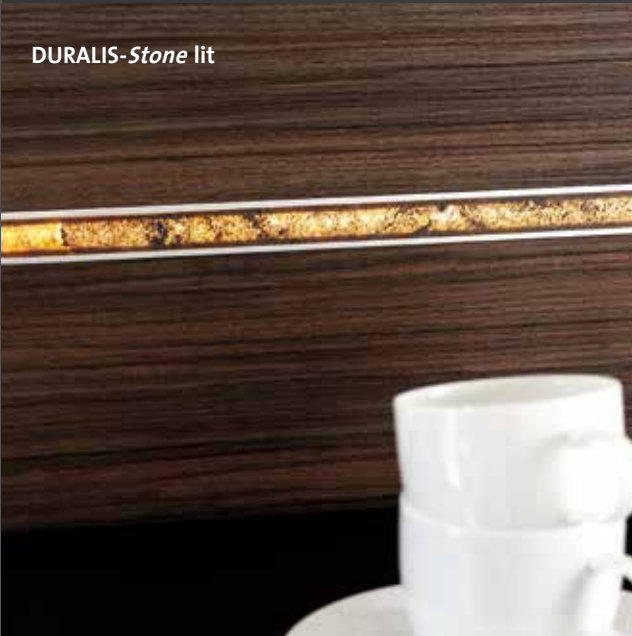
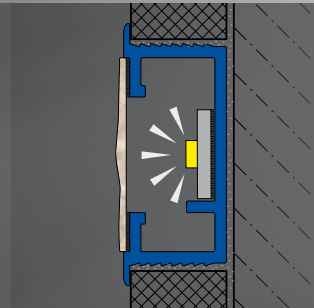


DURALIS-Stone
Complete profile, slate grey

without LED strip
 Aluminium silver anodised with natural stone inlay
 for the adhesion of LED strips

Length: 240 cm
 Height: 9, 12.5 mm
 Width: 20 mm

- If you're looking for something new and unusual, then DURALIS-Stone decorative profiles from DURAL are the perfect find. The profile cover is cut from genuine natural stone.
- The stone profiles are installed using the classic thin-bed mortar procedure, or wallmounted in furniture panels using adhesive.
- For lighting accessories, see page 10 / 11.



DURALIS-Stone lit



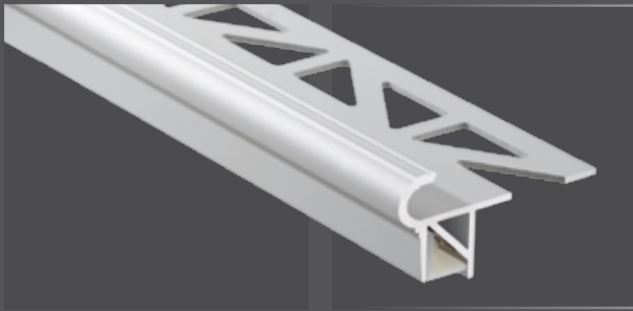
DURALIS-Stone unlit



FLORENTOSTEP-LED

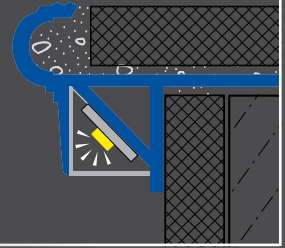
- Illuminated stair nosing profiles with a Florentine design for steps and stairs with tiled or natural stone surfaces, suitable for installation both internal and external.

- High quality lighting for steps and stairways.
- Extremely easy to install.
- An exceptional price: performance ratio.
- Also available as 8-step set and 1-step set.



FLORENTOSTEP-LED

without LED strip
 Aluminium silver anodised
 for the adhesion of LED strip
 Length: 250 cm
 Height: 9, 11 mm



- The highly decorative FLORENTOSTEP stair nosing profile is now also available in an illuminated LED variant. The timeless, elegant Florentine classic design and high loading capacity for the safe protection of step edges in all areas are further enhanced by the use of modern, bright LED strips.
- Illuminated stair nosing profiles offer a great deal in terms of visible safety.
- For LED strips – also suitable for outdoor use – and a comprehensive range of control and connection accessories, see page 10 / 11.
- FLORENTOSTEP-LED 8-step set for complete installation on 8 steps of stairs, including cabling and a 100-watt transformer. To set up lighting on stairs with more than 8 steps, multiple 8-step sets in combination with 1-step sets will be needed.
- FLORENTOSTEP-LED 1-step set for complete installation on 1 step of stairs, including cabling (without transformer) for connection to 8-step set.



FLORENTOSTEP-LED 8-STEP SET

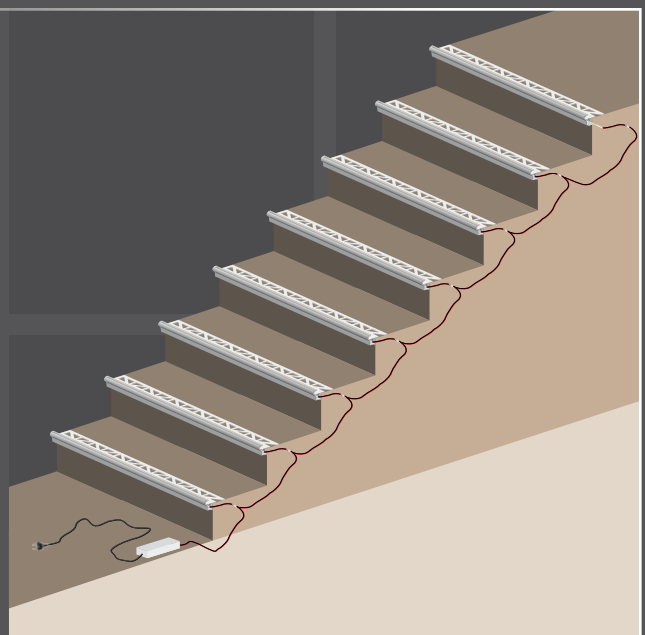
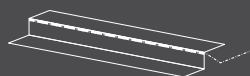
Complete Set
 incl. LED-strip, transformer,
 cable and cover
 for up to 8 steps
 Aluminium silver anodised
 max. step-width 150 cm
 Height: 9, 11 mm

8-step set:
 3 m connection cable,
 primary transformer 100 W.
 Extension cable for
 spiral staircases on request.

FLORENTOSTEP-LED 1-STEP SET

Set incl. LED-strip
 and cable for 1 step
 Aluminium silver anodised
 max. step-width 150 cm
 Height: 9, 11 mm

1-step set:





DURALIS-LED *Wall* DURALIS-LED *Floor*

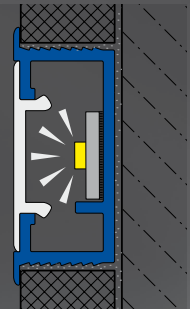
■ LED decorative profiles present a warm light and illuminate tiled walls and floors as well as natural stone areas. You may set bright and pleasant highlights or create a dimmed living atmosphere.

■ LED DURALIS *Wall* and *Floor* set new standards in ambient lighting in living areas and wet rooms.



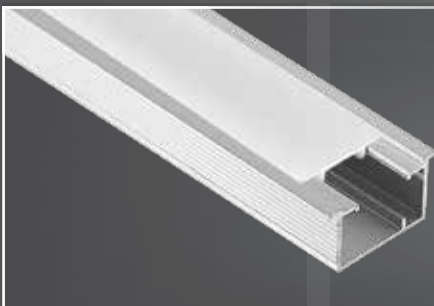
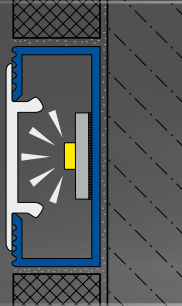
**DURALIS-LED Wall
with edge cover
Complete profile with cover**

without LED-Strip
Aluminium silver anodised
with marking for adhesion
of LED-Strip – IP 20 / IP 65
Length: 250 cm, Width: 20 mm
Height: 9, 12.5 mm



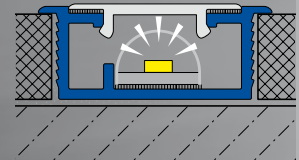
**DURALIS-LED Wall
without edge cover
Complete profile with cover**

without LED-Strip
Aluminium silver anodised
with marking for adhesion
of LED-Strip – IP 20 / IP 65
Length: 250 cm, Width: 20 mm
Height: 8 mm



**DURALIS-LED Floor
Complete profile with cover**

without LED-Strip
Aluminium silver anodised
with marking for adhesion
of LED-Strip – IP 65
Length: 250 cm
Installation height: 8 mm
Height: 9, 12.5 mm



- DURALIS-LED Floor is ideal for installation in flooring both indoors and outdoors and DURALIS-LED Wall is the perfect choice for walls in living spaces or wet areas.
- The LED-Profiles Wall and Floor are installed as normal either glued during assembly or set in thin-bed adhesive on any layer thickness starting from 8 mm.
- Connection materials, control units and 24 V DC LED stripes with the corresponding matched transformers in a range of power ratings are available as accessories on page 10 / 11.
- The basic profile and covers are also available individually.





SQUARELIGHT-LED

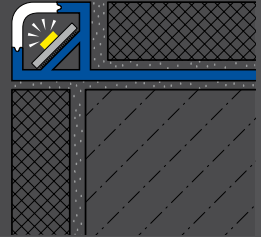
- A bright future for ceramic surfaces!
Modern LED technology is lighting up edges, terminations and transitions magnificently.
- The LED basic profiles are laid as normal in the tile adhesive.
- The LED strips are installed according to the protection class for wet or humid areas at a safe 24 V DC.



SQUARELIGHT Complete profile

without LED strip
Aluminium silver anodised
including white translucent cover,
rounded edges, polystyrene

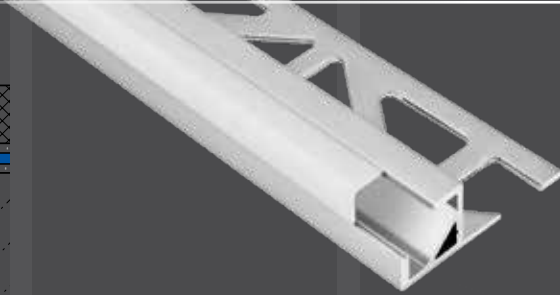
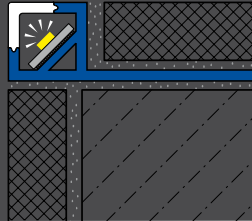
Length: 250 cm
Installation height: 9, 11 mm



SQUARELIGHT Complete profile

without LED strip
Aluminium silver anodised
including white translucent
cover, square, in polystyrene

Length: 250 cm
Installation height: 9, 11 mm



- The SQUARELIGHT complete profile consists of the basic profile with a strut for gluing of LED strips and the white translucent cover with the diffuse light function for LED illumination. The basic profile and covers are also available individually.

- Matching LED strips are available in two protection classes:
IP 20 for installation in living areas and
IP 65 for wet or humid areas.

- LED strips and the associated transformers to match the LEDs in various power ratings and an extensive selection of connection materials on page 10 / 11 are also part of the SQUARELIGHT range.



LED-ACCESSORIES

LED strips, controller, switches, dimmer switches, transformers and connection and extension cable

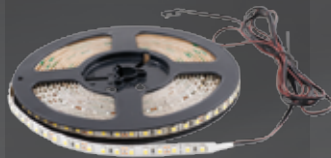
- The complete range of LED accessories offers everything you need to install, wire and control for the illuminated profiles by DURAL based on a 24 V DC power supply.



LED-STRIP warm white 2700 - 2900 K
LED-STRIP neutral white 3800 - 4100 K

IP 20 for living areas;
IP 65 with a silicone cover
for wet rooms or bathrooms

8 mm, 24 V DC,
7.2 W/m, CRI>80,
Self-adhesive, strips can be cut every 5 cm



LED-STRIP RGB,
incl. 3 white tones

RGB-W, dimmable
with accessories
and remote control
for colour change



WATERPROTECT IP 68

Set to protect against
water penetration
for use in showers and wet room

Set: 5 metres silicone tubing,
LED-Strip insertion tool,
4 end caps, 3D silicone adhesive



WIRELESS MODULE

Innovative control of LED profiles from a Smartphone or Tablet
via a Bluetooth connection.

**The “proxi by silvair” control app can be
downloaded free of charge:**



ON/OFF TOUCH SWITCH

For surface mounting, with blue LED and 6-way distribution box, max. 36 W plastic housing grey



ON/OFF DIMMER SWITCH

For surface mounting, with green LED and 6-way distribution box, max. 36 W plastic housing grey



LED RC-RECEIVER

For up to 6 radio-controlled recessed dimmers and table dimmers
Input: 24 V DC
Output: 24 V DC
max. 4 x 25 W



REMOTE CONTROL

With bracket



TOUCH-SENSOR SWITCH

For flush mounting, with audible acknowledgement signal, dimmer and memory function, max. 72 W
Stainless steel finish



LED RC-DIMMER

Recessed wall dimmer, available in black or white. Suitable for standard socket inserts.

Table dimmer, available in black



TRANSFORMER 15 W

Primary: 200-240 V AC
secondary: 24 V DC
with JMT socket
15 W with 2 connections



TRANSFORMER 30 W

Primary: 200-240 V AC
secondary: 24 V DC
with JMT socket
30 W with 4-way distribution



TRANSFORMER 50 W

Primary: 200-240 V AC
secondary: 24 V DC
with JMT socket
50 W with 6-way distribution



Heavy duty Transformers 75 W · 100 W · 150 W

Primary: 200-240 V AC
Secondary: 24 V DC,
max. 75 W, 100 W, 150 W

Installation by authorised and qualified electricians only
Material Plastic

DISTRIBUTION BOX

6-way distribution box
Plastic housing
Cable: 10 cm



EXTENSION CABLE

2.50 m
JMT plug /
JMT socket



TWIN CABLE

For the connection of several lights to a single transformer
1 JMT mini-plug /
2 JMT mini-sockets
5 cm



CONNECTION AND EXTENSION CABLE

For LED stripes
Clip / JMT plug 200 cm
Clip / Clip 20 / 200 cm



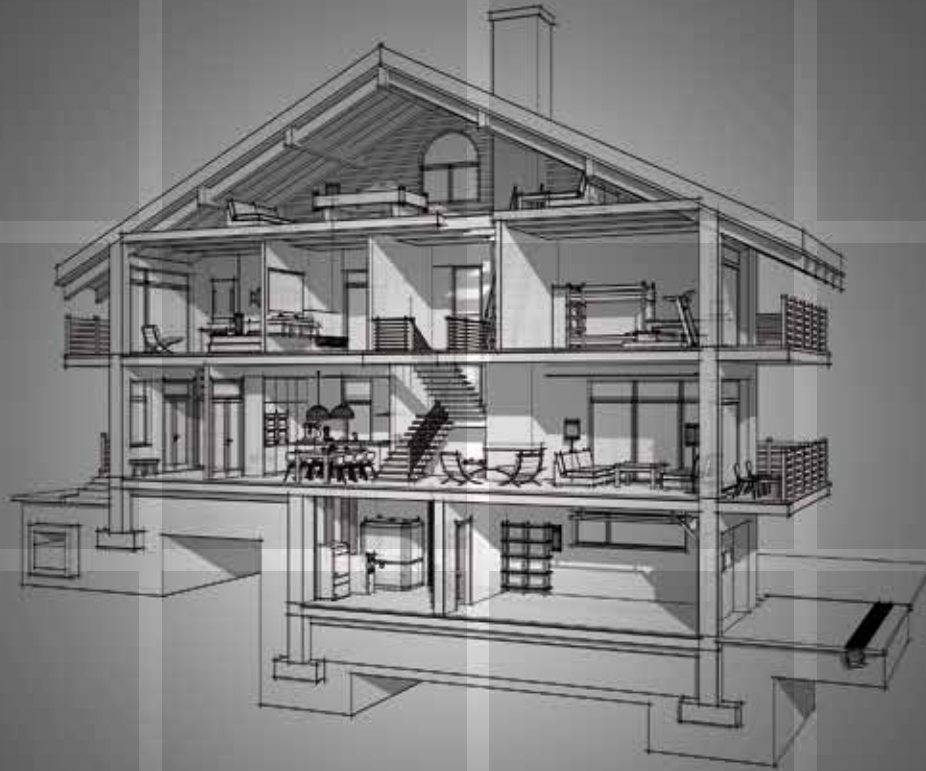
CONNECTION CLIP

For the direct connection of LED stripes,
plastic, 10 mm



DURAL is a comprehensive provider of floor-level shower systems, profiles and matting systems for walls and floors

DURAL



Tile profiles

Expansion joint and
movement joint profiles

Decoupling and drainage
mats

Barrier-free, floor level
shower systems

LED-Profiles

LED-Lightings

Skirting Profiles

Profiles for Balconies /
Terraces / Entranceways

Doormat systems

Step nosing profiles

Profile systems
for parquet, laminate,
carpet and design
flooring

Tactile orientation aids

Recommended by:

DURAL GMBH

Südring 11

D-56412 Ruppach-Goldhausen

Tel.: +49[0]2602/9261-0

Fax: +49[0]2602/9261-50

info@dural.com

www.dural.com