

EXP

EXPANSION- AND MOVEMENT JOINT PROFILES

DURAL



APPLICATIONS:

Thin-bed installation

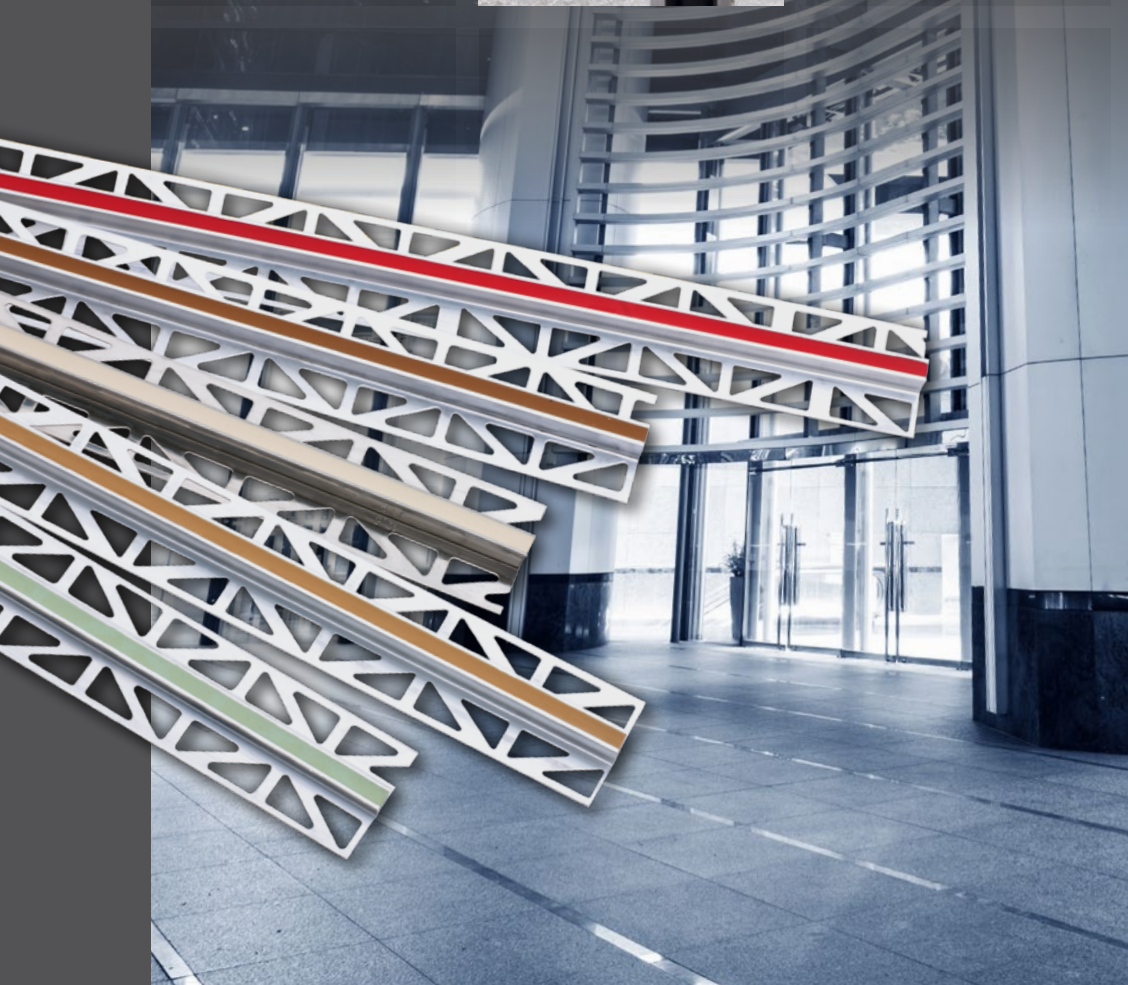
Thick-bed installation

Buildings and heavy
load applications

Cover profiles

Wall installations

Subsequent installation



DURAFLEX *Colour*

SLIMFLEX

DURAFLEX

DURAFLEX *Metal*

DURAFLEX PVC, TL

DURAFLEX SB, SL

DURAFLEX SG, SE

DURAFLEX KE, KF

DURAFLEX KA

DURAFLEX KB, KC

DURAFLEX SF

DURAFLEX

Expansion- and movement joint profiles

The biggest danger for any surface is lack of flexibility. Changes in temperature, mechanical stresses and impacts can lead to uncontrolled movement in walls and floors resulting in cracks and deformation.

DURAL faces up to this problem with a wide assortment of movement joint profiles for a whole range of demands and special solutions for specific architectural situations.

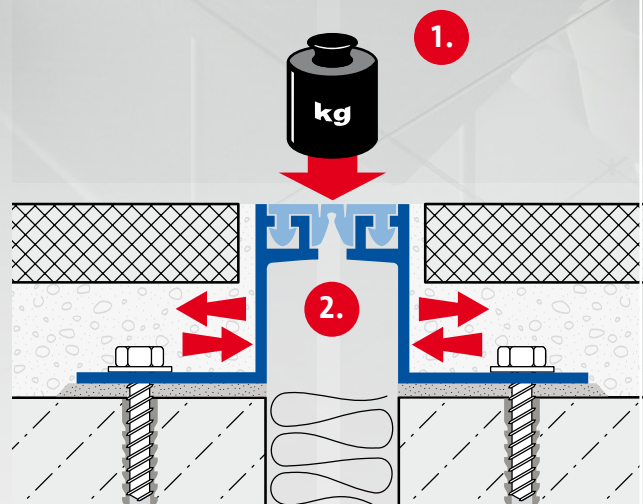
SPECIAL SOLUTIONS

Building partition joints, perimeter joints and standard movement joints are indispensable in the planning and design of modern buildings.

The constant demand for new shapes, new materials and techniques demands less and less standardisation and more special solutions or extras.

DURAL's standard range of movement joint profiles just form a basis for your building needs.

1. Mechanical stresses
2. High degrees of movement



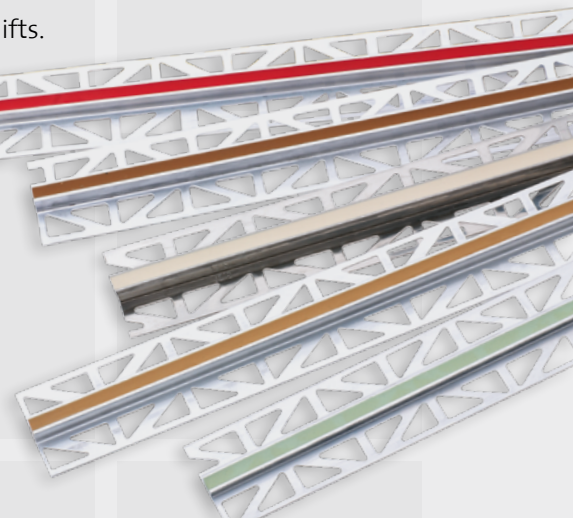
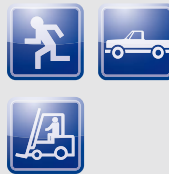
Product	Application	Material Profile / Infill	Application examples	Page
DURAFLEX <i>Colour</i>	Thin-bed installation	Aluminium / Epoxy-Compound Stainless steel (304) / Epoxy-Compound	Salesrooms, storages and production facilities with average loads	4
SLIMFLEX	Bonding	Aluminium / M-Rubber	Living rooms with light loads	5
DURAFLEX with narrow support bases	Thin-bed installation	Hard PVC / Soft PVC	Living rooms and balconies with light and average loads	6
DURAFLEX with wide support bases	Thin-bed installation	Hard PVC / Soft PVC	Offices, storages and salesrooms	6
DURAFLEX with extra-narrow visible width	Thin-bed installation	Hard PVC / Soft PVC	Living rooms and balconies with light and average loads	6
DURAFLEX <i>Metal</i>	Thin-bed installation	Aluminium / EPDM Stainless steel (304) / EPDM Brass / EPDM	Storages and production facilities with high loads	7
DURAFLEX PVC	Thick-bed installation, Vibrating floors	Hard PVC / Soft PVC	Industrial projects with average loads	8
DURAFLEX TL	Thick-bed installation, Vibrating floors	Aluminium / EPDM Stainless steel (304) / EPDM Brass / EPDM	Salesrooms, storages or production facilities with high loads and special demands for chemical resistance	9
DURAFLEX SB	Buildings and heavy load applications	Aluminium / EPDM	Salesrooms and shopping centers with average loads	10
DURAFLEX SC	Buildings and heavy load applications	Aluminium / EPDM	Car dealer exhibitions and basment garages with high loads	10
DURAFLEX SG	Buildings and heavy load applications	Stainless steel (304) / EPDM	Hospitals and hospices with high loads and particularly high resistance against aggressive media	11
DURAFLEX SE	Buildings and heavy load applications	Aluminium	Logistic centres or big storage facilities with very high loads	11
DURAFLEX KF	Subsequent installation	Aluminium PVC	Covering of joints in walls and floors with low traffic loads	12
DURAFLEX KE	Subsequent installation	Aluminium Stainless steel (304)	Covering of joints in walls and floors with average traffic loads	12
DURAFLEX KA	Subsequent installation	Aluminium Stainless steel (304)	Covering of joints in hospitals and production facilities with special demands for design and hygiene	13
DURAFLEX KB	Wall installations	Aluminium / Soft PVC	Large offices, foyers, halls, stadiums and stairways	14
DURAFLEX KC	Wall installations	Galvanised steel / Nitrile rubber	Large offices, foyers, halls, stadiums and stairways with higher loads	14
DURAFLEX SF	Subsequent installation	Aluminium / Nitrile rubber	Restoration and renovation of all office areas with larger joints	15

DURAFLEX Colour

Expansion- and movement joint profiles with **individual** colour selection for both Infill and profile*

Decide for yourself which colour you would like for your expansion joint. Irrespective of whether it matches the flooring, the tiled surface, the joint colour or any (almost any!) RAL colour – the choice is up to you. And if you like, you can even match the colour of the carrier profile according to your wishes. In the powder-coated aluminium version, almost every single RAL colour is available. Even curves are not a problem thanks to the flexible Z-Flex carrier profiles. Thus **DURAFLEX Colour** profiles satisfy the most stringent technical requirements. The carrier profiles in aluminium or stainless steel offer a secure hold in the subsurface.

The Infill, made of a high quality epoxy compound, is able to absorb up to ± 2.1 mm of movement. Areas in which **DURAFLEX Colour** profiles have been installed can be accessed by HGVs and forklifts.



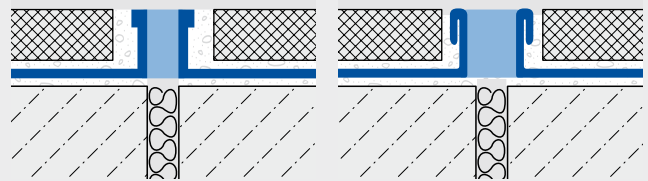
DURAFLEX Colour

Material:
Aluminium,
Stainless steel (304)

Length: 250 cm
Width: 12 mm
Height: 6 – 15 mm
(More heights on request)

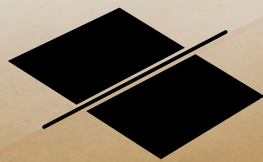
Infill:
Epoxy-Compound

Joint width:
Aluminium: 6 mm
Stainless steel: 7 mm



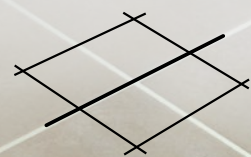
Infill colour selection Flooring surface

The profile Infill to match the colour of the laid flooring surface



Infill colour selection Joint mortar

The profile Infill to match the colour of the applied joint mortar



Infill colour selection RAL colours

The profile* colour and profile Infill colour according to RAL colours

* in aluminium only



Profile selection Material

- Aluminium
- Aluminium powder coated
- Aluminium Z-Flex
- Stainless steel (304)



DURAFLEX SLIMFLEX

Expansion- and movement joint profiles
for thin-bed installation



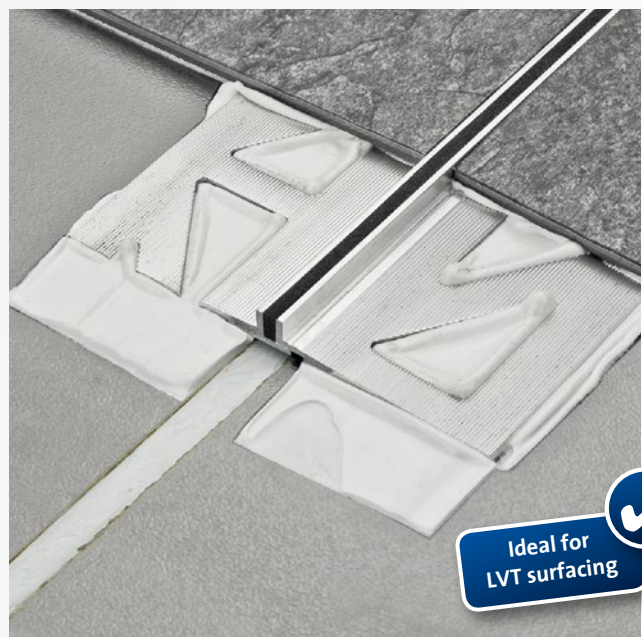
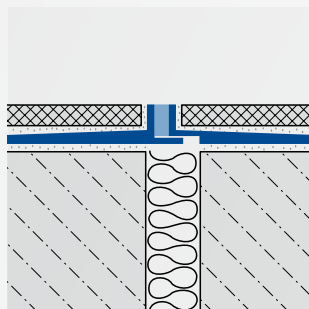
SLIMFLEX

SLIMFLEX is an extremely narrow and elegant expansion joint profile for light stresses in indoor areas. Despite the low visible width of only 4 mm, the special construction of an aluminium carrier profile and the highly elastic Infill in M-rubber facilitate a movement absorption of 2 mm (+/-1 mm).

- Ideal for use with LVT flooring surfaces

SLIMFLEX

Material: Aluminium
Infill: M-Rubber black
Length: 250 cm
Width: 4 mm
Height: 2 – 12.5 mm
Movement absorption:
2 mm (+/- 1 mm)



DURAFLEX with narrow, unpunched bases

in coextruded hard and soft PVC with narrow, unpunched support bases for use in areas subject to moderate stresses and in the outdoor area.

- Living areas
- Balconies
- Outdoor areas

DURAFLEX with narrow, unpunched bases

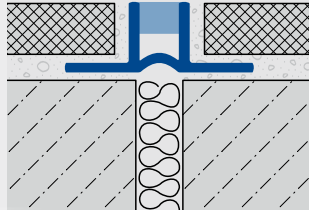
Material: Hard and soft PVC

Infill: EPDM grey

Width: 8 mm

Height: 6 – 15 mm

Length: 250 cm



DURAFLEX with large, punched bases

in coextruded hard and soft PVC with large, punched support bases for extra-stable fixing below the tiled surface for areas subject to moderate foot traffic.

- Offices
- Storage rooms
- Sales rooms

DURAFLEX with large, punched bases

Material: Hard and soft PVC

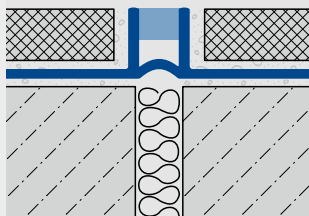
Infill: EPDM

white, beige, black, grey, dark grey

Width: 8 mm

Height: 6 – 15 mm

Length: 250 cm



DURAFLEX with extra-narrow surface

in coextruded hard and soft PVC with an extra-narrow surface for areas subject to minor stresses, even outdoors.

The design-based predetermined breaking point also facilitates its use as a connection profile.

- Living areas
- Offices and exhibition spaces
- Balconies

DURAFLEX with extra-narrow surface

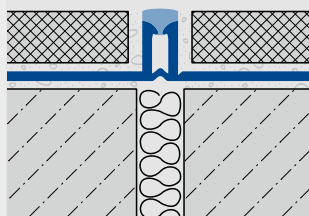
Material: Hard and soft PVC

Colour: grey, dark grey

Width: 5 mm

Height: 6 – 12.5 mm

Length: 250 cm



Base with predetermined breaking point



DURAFLEX Metal

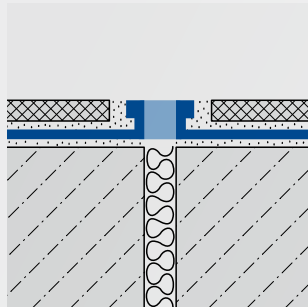
DURAFLEX metal profiles with an EPDM expansion zone are made for particularly highly stressed floors. The specially developed expansion joint profile absorbs heavy stresses and spreads them evenly throughout the flooring and the foundations. It also prevents transmission of footfall and sounds from other objects.

- Large domestic spaces ■ Warehouses and production facilities
- Underground garages ■ Shopping centres ■ Domestic rooms



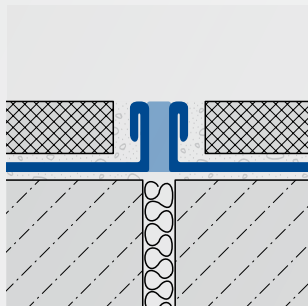
DURAFLEX Metal Aluminium

Material: Aluminium
 Infill: EPDM grey
 Width: 10 – 20 mm
 Height: 2 – 30 mm
 Infill: EPDM black
 Width: 20 mm
 Height: 10 – 12.5 mm
 Length: 250 cm



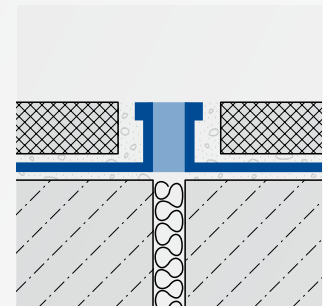
DURAFLEX Metal Stainless steel

Material: Stainless steel (304)
 Infill: EPDM grey
 Width: 8 mm
 Height: 2 – 30 mm
 Length: 250 cm



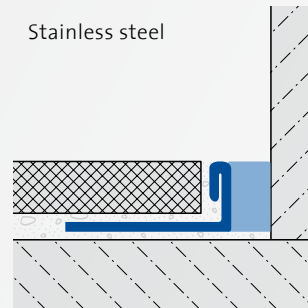
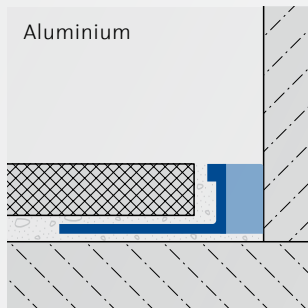
DURAFLEX Metal Brass

Material: Brass
 Infill: EPDM grey
 Width: 10 mm
 Height: 3 – 30 mm
 Length: 250 cm



DURAFLEX Metal Wall connection

Material: Aluminium, Stainless steel (304)
 Infill: EPDM grey
 Aluminium, Width: 8 mm
 Stainless steel, Width: 7 mm
 Height: 8 – 15 mm
 Length: 250 cm

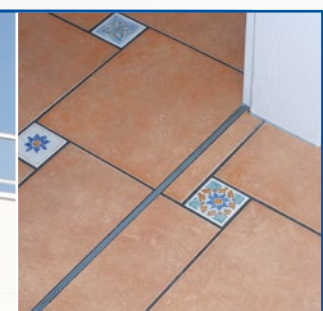


BUILDING DESCRIPTION:

Production facility with adjoining domestic dwelling
 450 m² of production space,
 155 m² of dwelling

Floor: fully laid with tiles and natural stone, linoleum in offices.

DURAFLEX with narrow support bases in dwelling and offices, laid in doorways and on the patio. **DURAFLEX Brass and Stainless Steel** divide the tiled floor of the production facility into 70 m² areas.



DURAFLEX PVC TL

Expansion- and movement joint profiles
for thick-bed installation



DURAFLEX PVC

DURAFLEX PVC coextruded expansion joint profiles with an 8 mm visible width are ideal for the reduction of tensile and compressive stresses in ceramic flooring surfaces which are laid using the thick bed or vibrating floor procedure. The soft PVC inner core absorbs any deformations which occur, whilst the outer coating in hard PVC guarantees efficient edge protection.

■ For use in industrial projects

DURAFLEX PVC

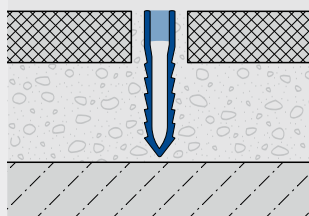
Material: PVC

Colours: white, beige, black, grey, grey-transparent, terracotta

Height: 30 – 65 mm

Width: 8 mm

Length: 250 cm



DURAFLEX TL

The DURAFLEX TL expansion joint profiles with a 10 mm visible width are ideal for use with flooring surfaces which are laid using the thick bed or vibrating floor procedure and where there are special requirements in terms of edge protection, movement absorption and resistance to external influences, acids, alkalis or weathering. The profile lateral sections are available in a choice of aluminium, V2A stainless steel or brass, which are vulcanised with the flexible EPDM expansion layer, producing an extremely stable connection.

The profiles can be installed with or without screed anchors depending on the application area.

- Surfaces with various flooring and degrees of loading leading to greater need for edge protection
- Sales floors
- Production spaces
- Warehouses



DURAFLEX TL

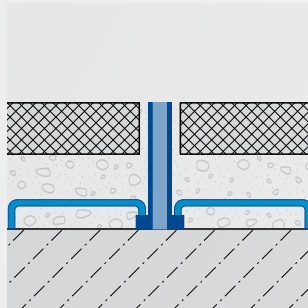
Material: Aluminium, Stainless steel (304), Brass

Infill: EPDM beige, black, grey

Width: 10 mm

Height: 20 – 50 mm

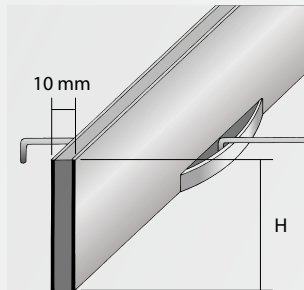
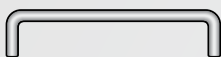
Length: 250 cm



DURAFLEX TL Anchor

Iron

If required 10 pcs. per 1m



BUILDING DESCRIPTION:

Furniture store with warehouse;

1.250 m² of sales floor, 1.750 m² of warehousing
 Floor: polished granite sales floor and painted concrete flooring in the warehouse, all extensively used and subject to heavy loads. **DURAFLEX TL** on the sales floor and in the warehouse dividing the floor into areas of 100 m². Profiles providing enhanced edge protection are also slightly curved in the vicinity of the counter.

DURAFLEX

SB
SC
SG
SE

Expansion- and movement joint profiles
for buildings and heavy load applications

DURAFLEX SB und SC

DURAFLEX expansion joint profiles in the SB and SC series have been designed for use in heavily frequented areas subject to high stresses. The visible surface of the profile is 37 mm in the standard version and 45 mm in the reinforced version. The lateral aluminium profiles are combined with an Infill made of thermoplastic elastomer (EPDM) for high horizontal and vertical high movement absorption. The inlays are easily interchangeable as required.

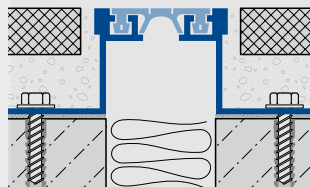
A wall / floor connection profile is available for serie SB.

- Shopping centres
- Sales floors in car showrooms etc.
- Underground garages



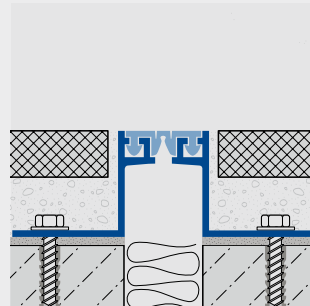
DURAFLEX SC

Material: Aluminium
Infill: EPDM black, grey
Width: 45 mm
Height: 35 – 90 mm
Length: 300 cm



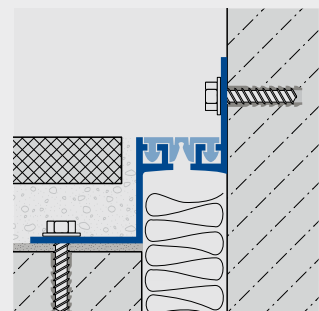
DURAFLEX SB

Material: Aluminium
Infill: EPDM black, grey
Width: 37 mm
Height: 15 – 50 mm
Length: 250 cm



DURAFLEX SB Corner design

Material: Aluminium
Infill: EPDM black, grey
Width: 37 mm
Height: 15 – 50 mm
Length: 250 cm



BUILDING DESCRIPTION:

Newly built shopping centre with car park

1.400 m² of shopping space and 700 m² space for cars
Floor: granite floor with carpets throughout the shopping space and screed in the car park.

DURAFLEX SE along the large building partition joints and dividing the surface of the car park. At certain critical points heavy loading profiles are enhanced with an extra segment to cover the largest joints.



DURAFLEX SG

DURAFLEX expansion joint profiles in the SG series are ideal for use under extremely high stresses and for high resistance requirements to aggressive media in highly frequented areas, despite their low visible width of only 30 mm. The lateral profiles in V2A stainless steel are combined with a EPDM infill for high movement absorption. The inlays are easily interchangeable as required.

- Hospitals
- Nursing homes
- Production facilities

DURAFLEX SG

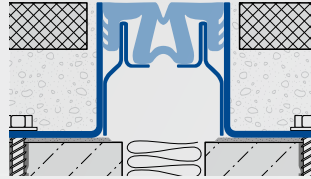
Material: Stainless steel (304)

Infill: EPDM

Width: 30 mm

Height: 35, 50 mm

Length: 300 cm



DURAFLEX SE

DURAFLEX expansion joint profiles in the SE series in solid aluminium with a ridged, anti-slip surface and a 70 mm visible width have been developed for use in areas where extremely high stresses occur with simultaneously high horizontal and vertical movement absorption.

- Logistics centres
- Warehouses or production facilities, e.g. aircraft or ship builders

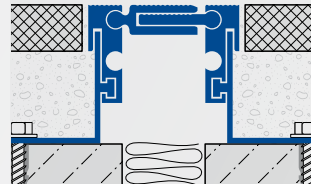
DURAFLEX SE

Material: Aluminium natural

Width: 70 mm

Height: 43 – 88 mm

Length: 400 cm



BUILDING DESCRIPTION:

Car showroom with offices and repair workshop

Showroom 1.240 m²,
repair workshop 360 m²

Floor: fine stone tiles in showroom and non-slip stone ceramic tiles in workshop

DURAFLEX SB profiles divide the tiled surface in the showroom, being used for both movement joints and area perimeters. In the workshop, **DURAFLEX SG** profiles are used due to their greater resistance to chemicals.



DURAFLEX

KF
KE
KA

Cover profiles for wall and floor for
Expansion- and movement joint profiles

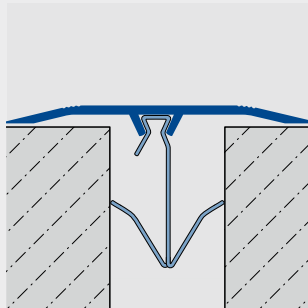
DURAFLEX KE und KF

DURAFLEX cover profiles in the KE and KF series are aluminium cover profiles with a reinforced construction for the subsequent installation of wall and floor joints. Fixing clips in V2A stainless steel ensure a secure hold in the joint. In series KF, a corner variant is possible using a matching shaped piece.

- All wall and floor surfaces with low traffic

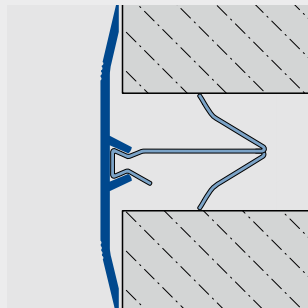
DURAFLEX KE

Material:
Aluminium heavy duty
Width: 60, 70 mm
Length: 300 cm



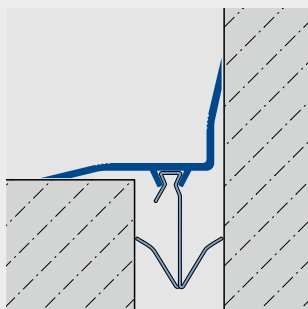
DURAFLEX KF

Material: Aluminium
silver anodised
Width: 50 – 140 mm
Material: PVC
white, beige, grey
Width: 50, 70 mm
Length: 300 cm



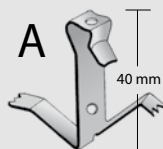
DURAFLEX KF Corner design

Material: Aluminium
silver anodised
Width: 50 – 90 mm
Material: PVC
white, beige, grey
Width: 50, 70 mm
Length: 300 cm



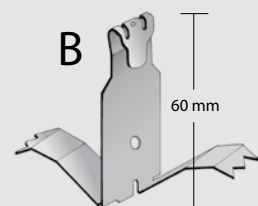
DURAFLEX Fixing Clip Type A

Material: Stainless steel (304)
Height: 40 mm
min./max. Joint width:
15 / 30 mm



DURAFLEX Fixing Clip Typ B

Material: Stainless steel (304)
Height: 60 mm
min./max. Joint width:
20 / 45 mm



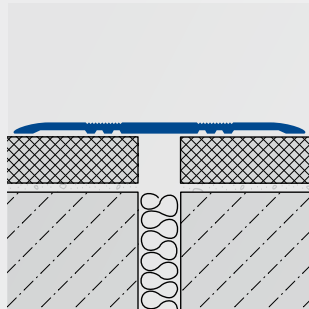
DURAFLEX KA

DURAFLEX KA profiles are cover profiles available in aluminium or V2A stainless steel for the bridging of wide joints and are suitable for subsequent installation. The profiles are secured on one side using screws, or as an adhesive version on both sides to the flooring surface.

- Hospitals
- Production facilities requiring quality design and hygiene

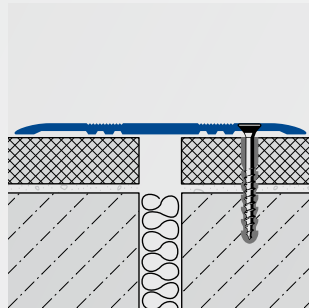
DURAFLEX KA, undrilled self-adhesive

Material: Aluminium natural, silver anodised
 Width x Thickness:
 60 x 3,5 mm, 80 x 3,5 mm
 100 x 4,0 mm, 120 x 4,0 mm
 Length: 250 cm



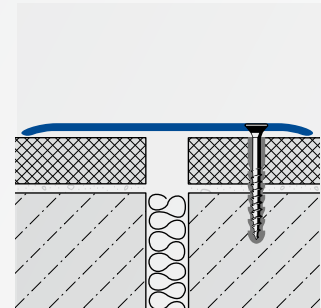
DURAFLEX KA, drilled

Material: Aluminium natural, silver anodised
 Width x Thickness:
 60 x 3,5 mm, 80 x 3,5 mm
 100 x 4,0 mm, 120 x 4,0 mm
 Length: 250 cm



DURAFLEX KA, drilled

Material: Stainless steel brushed (240K)
 Width x Thickness:
 60 x 3,0 mm,
 80 x 3,0 mm,
 100 x 3,0 mm
 Length: 250 cm



BUILDING DESCRIPTION:

An extension wing is to be built from scratch in conjunction with the partial renovation of a hospital.

Floor: tiles and linoleum in both new and old parts of the building. **DURAFLEX KE** throughout the corridors to cover existing building partition joints and at the edges of sterile rooms (operating theatres etc.). **DURAFLEX KA** in the foyer and ambulance entrance where traffic is heavy.

DURAFLEX ^{KB} ^{KC}

Expansion- and movement joint profiles
for wall installations

DURAFLEX KB und KC

DURAFLEX expansion joint profiles in the KB and KC series have been developed for use in walls to bridge wide joints (up to max. 50 mm).

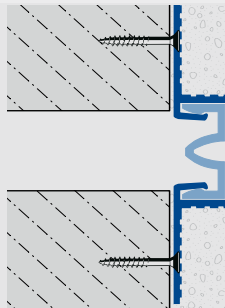
The carrier profiles in aluminium or galvanised steel are fitted with an inlay in soft PVC or nitrile rubber to absorb movement. Corner connection profiles complete the range.

- Large open plan offices of modular design
- Exhibition halls
- Foyers
- Stairways
- Halls and stadiums
- Hospitals



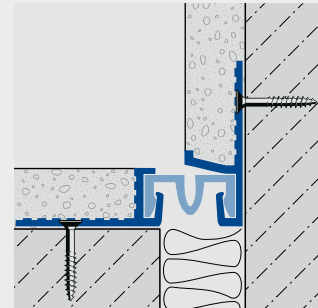
DURAFLEX KB

Material: Aluminium
Infill: Soft PVC black
Joint width: 30, 50 mm
Width: 34 / 60 mm
Height: 17 mm
Length: 400 cm



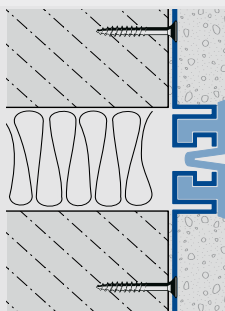
DURAFLEX KB Corner design

Material: Aluminium
Infill: Soft PVC black
Joint width: 30, 50 mm
Width: 15 / 48 mm
Height: 17 mm
Length: 400 cm



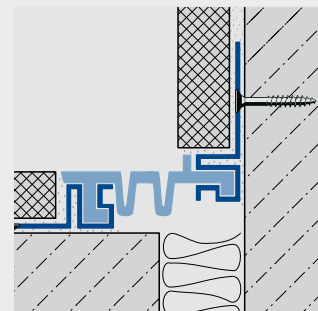
DURAFLEX KC

Material: Galvanised steel
Infill: Nitrile rubber black
Joint width: 30, 50 mm
Height: 11 – 20 mm
Width: 37 / 67 mm
Length: 300 cm



DURAFLEX KC Corner design

Material: Galvanised steel
Infill: Nitrile rubber black
Joint width: 30, 50 mm
Width: 37 / 67 mm
Height: 11 – 20 mm
Length: 300 cm

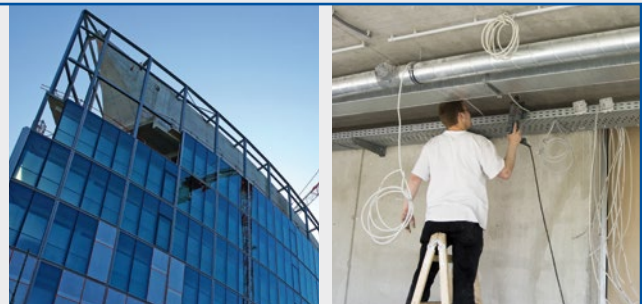


BUILDING DESCRIPTION:

Rebuilding of an office block with 127 offices with a total floor space of 8.500 m²

Walls: Concrete and light post and beam construction with plasterboard planking, plastered ceiling and wall tiles.

DURAFLEX KC along the building partition joints and splitting up wall surfaces in the vicinity of the foyer and lift, which are slightly critical from an engineering point of view. All tiled surface are edged with the corner installation version of **DURAFLEX KB**.



DURAFLEX SF

Expansion- and movement joint profile
for subsequent installation

DURAFLEX SF

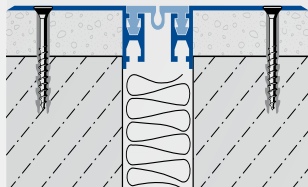
DURAFLEX expansion joint profiles in the SF series have been specially developed as renovation profiles for use in highly-frequented areas which need to be bridged due to heavy edge damage. An elastic joint inlay made of nitrile rubber absorbs horizontal and vertical movements and reduces the transmission of footfall noise. The surface finish of the aluminium lateral sections is ridged to prevent slipping and a wall/floor connection is possible using a matching shaped piece.

- Restorations and renovation of all floor surfaces with large partition or area dividing joints



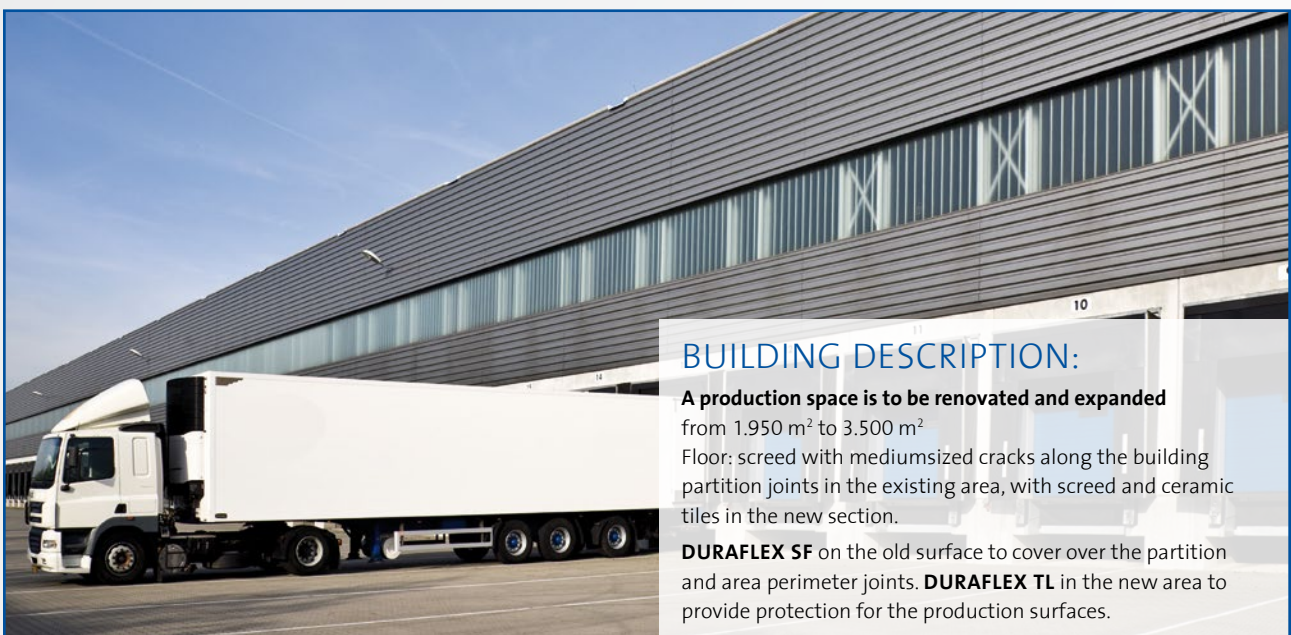
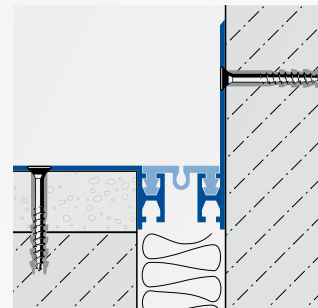
DURAFLEX SF

Material: Aluminium
Infill: Nitrile rubber
Joint width: 30, 50 mm
Width: 150, 175 mm
Length: 400 cm



DURAFLEX SF Corner design

Material: Aluminium
Infill: Nitrile rubber
Joint width: 30, 50 mm
Width: 90, 115 mm
Length: 400 cm



BUILDING DESCRIPTION:

A production space is to be renovated and expanded
from 1.950 m² to 3.500 m²

Floor: screed with mediumsized cracks along the building partition joints in the existing area, with screed and ceramic tiles in the new section.

DURAFLEX SF on the old surface to cover over the partition and area perimeter joints. **DURAFLEX TL** in the new area to provide protection for the production surfaces.

DURAL is a comprehensive provider of profiles, floor-level shower systems, and matting systems for walls and floors.



Stair nosing profiles

Tile profiles

Floor level shower systems

LED profiles and accessories

Skirting profiles

Balcony angle profiles

Tactile orientation aids

Doormat systems

Profiles for parquet, laminate, carpet and design flooring profiles

Expansion joint- and movement joint profiles

Matting system for waterproofing and decoupling

Drainage channel systems

Recommended by:

DURAL GMBH
Südring 11
D-56412 Ruppach-Goldhausen
Tel. +49[0]2602/9261-0
Fax +49[0]2602/9261-50
info@dural.com
www.dural.com