

Since the usage and finishing of the product is not under our control, we accept no liability for the success of the work and can therefore only guarantee the nature of our products as per the accompanying product data sheets and in accordance with our general terms and conditions of sale. The properties listed here represent no guarantee with respect to the eventual use of our products. We reserve the right to make changes due to technical advances. Any other technical information given in the course of a consultation must be confirmed in writing. Colours shown here are restricted by the printing techniques and may differ from those exhibited by the products themselves. We also reserve the right to make alterations to the product technology or design. Only the current version of this data sheet is valid. Such versions are accessible by anyone via the internet. The issue of the latest data sheet invalidates all those that have been published beforehand.

# DURAFLEX KB, KC

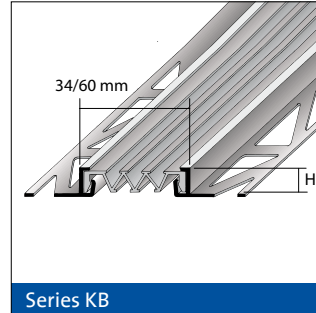
1/2

## Expansion joint profiles for walls – Series KB, KC

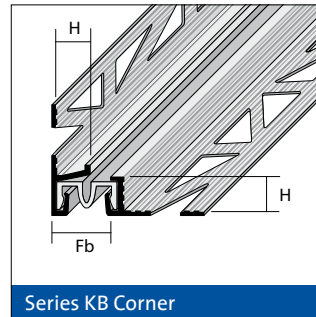
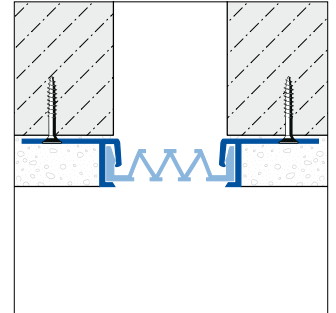
- Information Sheet -



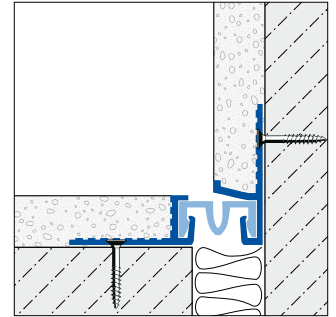
Oils, grease, mineral oils



Series KB



Series KB Corner



### APPLICATIONS:

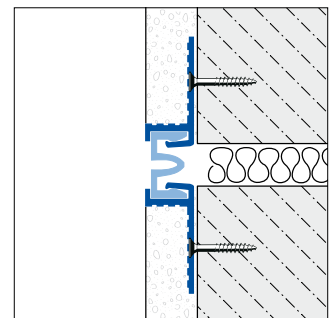
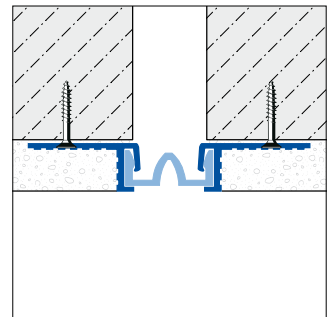
Expansion joint profiles for the bridging of wide joints in interior and exterior walls. Inlay made of expandable soft PVC (aluminium profile) or nitrile rubber (steel profile). Corner versions also available.

### PROCESSING:

Apply the joint profile congruently across the joint, align straight and secure using a small amount of cement. Then apply a layer of plaster, making sure that it finishes flush with the top edge of the profile.

Before applying the plaster, the profile should be masked accordingly across its entire width.

**The following applies to all products / materials:** Check the suitability of this product for use in each individual application case with respect to mechanical and chemical loads and stresses. The generally recognised rules of good engineering practice should always be observed.



DURAL GmbH

Südring 11

D-56412 Ruppach-Goldhausen

Tel. +49 (0) 2602/9261-0

Fax +49 (0) 2602/9261-50

info@dural.com

# DURAFLEX KB, KC

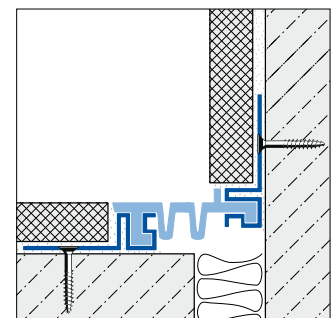
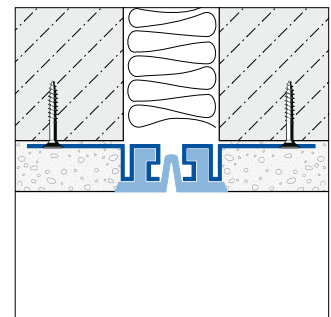
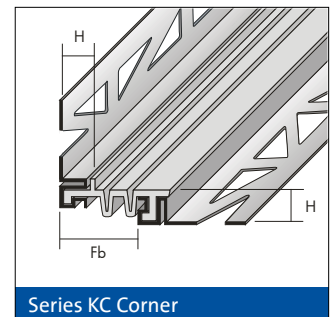
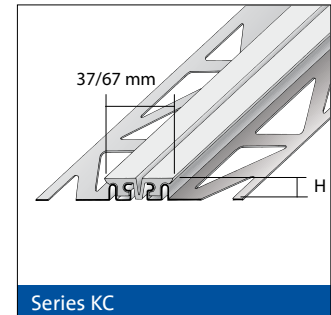
2/2

## Expansion joint profiles for walls – Series KB, KC

- Information Sheet -

### CARE:

DURAFLEX joint profiles need no special care. If necessary, clean the profile surface using a neutral detergent, then wipe dry. Do not use acid or alkaline based detergents.



### PRODUCT DATA:

<b>MATERIAL:</b>	Series KB: Aluminium with soft PVC inlay, black Series KC: Galvanised steel with nitrile rubber inlay, black
<b>DIMENSIONS:</b>	Series KB: Height 17 mm, visible width 34 / 66 mm Series KB corner version: Height 17 mm, visible width 15 / 48 mm Series KC: Height 11 / 14 / 20 mm, visible width 37 / 67 mm
<b>JOINT WIDTH:</b>	Series KB: Max. 30 / 50 mm for 17 mm height Series KC: Max. 30 / 50 mm for 11 / 14 / 20 mm height
<b>PROFILE LENGTH:</b>	Series KB: 400 cm Series KC: 300 cm

DURAL GmbH

Südring 11

D-56412 Ruppach-Goldhausen

Tel. +49 (0) 2602/9261-0

Fax +49 (0) 2602/9261-50

info@dural.com