

Since the usage and finishing of the product is not under our control, we accept no liability for the success of the work and can therefore only guarantee the nature of our products as per the accompanying product data sheets and in accordance with our general terms and conditions of sale. The properties listed here represent no guarantee with respect to the eventual use of our products. We reserve the right to make changes due to technical advances. Any other technical information given in the course of a consultation must be confirmed in writing. Colours shown here are restricted by the printing techniques and may differ from those exhibited by the products themselves. We also reserve the right to make alterations to the product technology or design. Only the current version of this data sheet is valid. Such versions are accessible by anyone via the internet. The issue of the latest data sheet invalidates all those that have been published beforehand.

DURABAL ST

1/2

Height-adjustable boundary profile with integrated drainage for balconies and terraces

- Installation instructions -



GENERAL

DURABAL ST is a boundary profile for balconies and terraces which can also be installed on thinner, self-supporting ground coverings. For general information on the product, please refer to the product information on-line at www.dural.de.

INSTALLATION INSTRUCTIONS

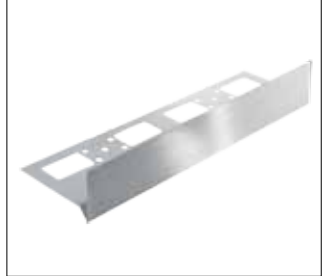
The DURABAL ST profiles should be installed during preparation of the subsurface before the building waterproofing is applied.

The ground covering construction above the waterproofing can be designed for direct installation, with supports, in a gravel/crushed-stone bed or with drainage mortar. DURABAL ST is also extremely suitable for use as a gravel strip. Installation in tile cement (thin-bed method) does not make sense, since this blocks the functioning of the internal drainage.

The support base of the base profile should be incorporated in the subsurface appropriate to height. There may be no edges on which drained water could accumulate. For a lasting hold, fasten the profile to the subsurface using stainless steel screws. Make sure the screws are flush with the support base to avoid damage to the building waterproofing.

Then install the building waterproofing up to the beginning of the drip edge. Due to the 12 cm wide support base, the use of self-adhesive film is also possible.

DURAL



DURAL GmbH

Südring 11

D-56412 Ruppach-Goldhausen

Tel. +49 (0) 2602/9261-0

Fax +49 (0) 2602/9261-50

info@dural.com

Height-adjustable boundary profile with integrated drainage for balconies and terraces

- Installation instructions -

The drainage mat (e.g. DURABASE DD 80 ++) is guided to the internal drainage, to protect against clogging of the drainage openings by dirt. We also recommend immediate use of a drainage mat with drainage mortar, gravel/crushed-stone bed installation or when used as a gravel strip to protect the building waterproofing against damage and ensure reliable water drainage on a permanent basis.

To adjust the height to new ground covering, plug-in profiles are available in a variety of heights. The plug-in profile is simply pushed onto the base profile and adjusted. The selected height is then fixed using a technical clamping effect. If additional fixing is needed, assembly adhesive can be applied to the inside of the plug-in profile.

DURABAL ST installation heights:

Base profile	Plug-in profile	Dimensions
STE 30-SF	STE 30-SF-XA	32 - 45 mm
STE 30-SF	STE 45-SF-XA	32 - 60 mm
STE 30-SF	STE 60-SF-XA	42 - 75 mm
STE 30-SF	STE 75-SF-XA	57 - 90 mm
STE 60-SF	STE 30-SF-XA	62 - 75 mm
STE 60-SF	STE 45-SF-XA	62 - 90 mm
STE 60-SF	STE 60-SF-XA	62 - 105 mm
STE 60-SF	STE 75-SF-XA	62 - 120 mm

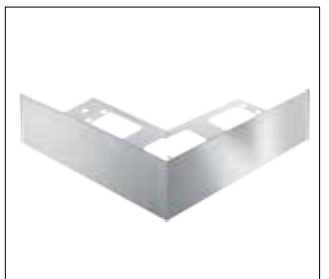
MATERIAL CHARACTERISTICS AND CARE

All components of the system are manufactured from V4A stainless steel (316). This alloy is highly resistant to weather effects, acids and alkaline solutions. DURABAL ST can therefore also be used in heavily affected outdoor areas. These include, for example, areas with frequent use of road salt or coastal regions, as well as directly adjacent lawns where the profiles are exposed to highly aggressive acids during fertilization.

No special care of the DURABAL ST profiles is needed.

INDICATIONS

It is not possible to take every eventuality during the installation process into account. These installation instructions are provided as a recommendation and must be adapted to the specific conditions of the installation site in each individual case. The generally recognised rules of good engineering practice must always be observed! The following applies to all products/materials: Usability in terms of mechanical and chemical loads should be carefully checked in each case before installation.

DURAL

DURAL GmbH

Südring 11

D-56412 Ruppach-Goldhausen

Tel. +49 (0) 2602/9261-0

Fax +49 (0) 2602/9261-50

info@dural.com